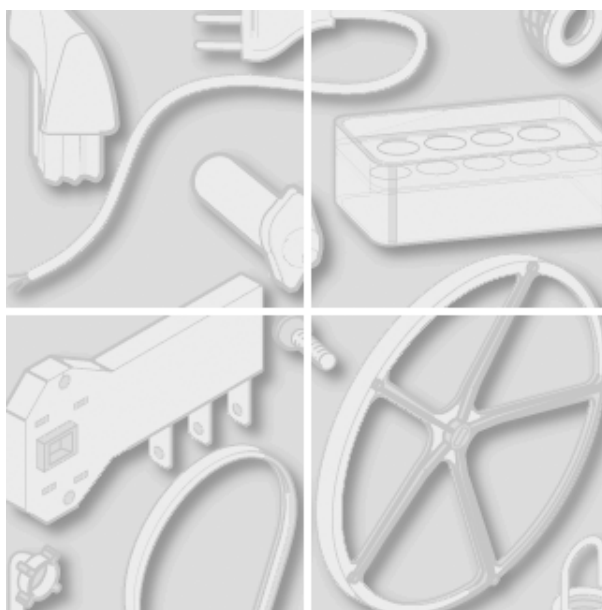


Merloni Elettrodomestici



Model type:
WGS838TXU

Commercial code:
21626

General notes

Technical Documentation guidelines

You can find herewith some generic information to simplify consulting of technical documentation:

1. Models of same range share the same exploded views, which report the richest set of spare parts: generally, a model does not necessarily have a related spare part for each particular shown on exploded views.

2. Some spare parts can not be represented directly on the exploded views (instruction booklets, specific kit, etc...). You can find those codes in the spare parts list with the same reference of particular where spares are installed or with references 099, 999. Instruction booklets, once managed, appear with 000 reference.

3. On the higher right site of each exploded view there is a serial number which indicates the beginning of the production of certain range: some models might have more than an exploded view for a given category, each distinguished by a different serial no. and linked to another spare parts list. In this case, serial no. is required to supply the right spare part code. Exploded view to be considered is the one with a more recent serial no. but previous than the one of the model that needs assistance.

4. Exploded views might require further updates even after publishing. Addition of new spares will go on following the already existing numeration references. Revision number of an exploded view is shown into last four digits of serial number into upper right hand corner.

5. The spare parts list associated to an exploded view shows related codes of spares managed for a certain model; for each spare part other informations are available:

REF: reference no of spare into a table; SUBSTITUTE: list of spare(s) which can replace a code but that keeps same functional characteristics

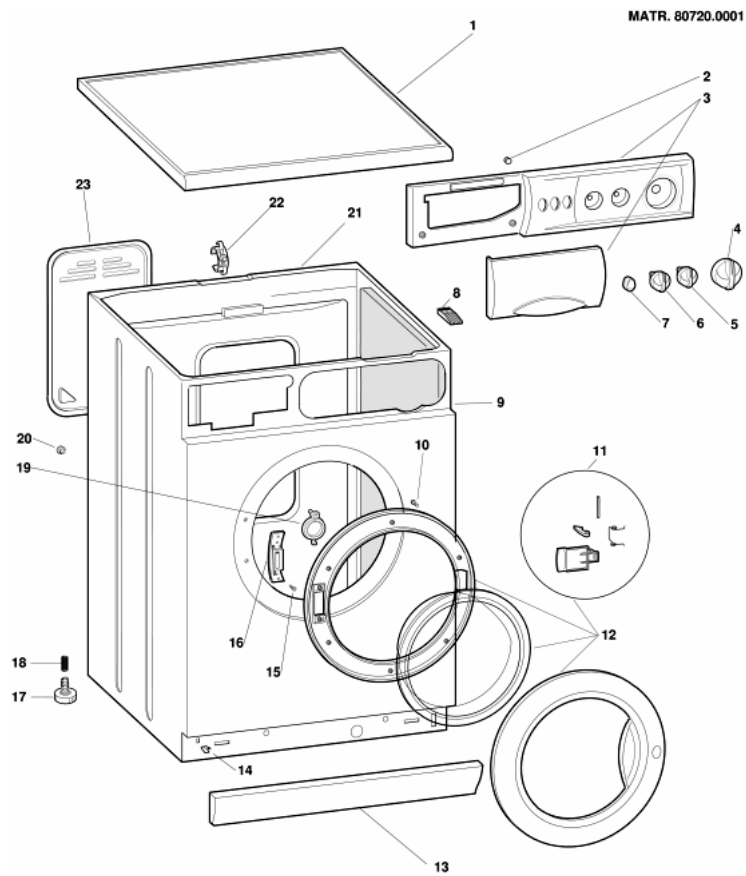
INDUSTRIAL CODE: list of variables of a model (shown into model label) where such spare is used; NOTICE: code of information(s) to refer to complete technical intervention, track for changes or to find correct spare part code.

6. Some notices, into a same section are generic therefore cannot be directly linked to a spare part. In order to assist a model in the best way as possible, it is helpful to pay attention to all notices and constantly verify documentation updates

7. Technical documentation cover shows model name and its commercial codes

pdf_tavola_title_ENG

cod. 1150120



1150120

Spare parts list

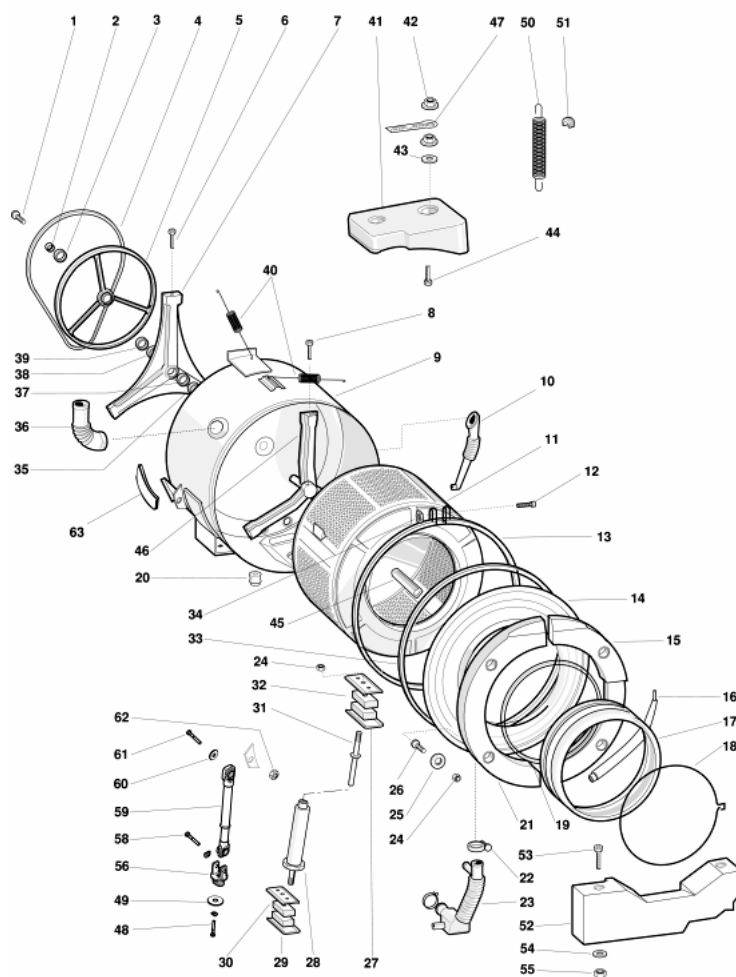
Spare parts list cod. 1150120

Ref.	Code	Substitute	Industrial code	Description	Notice
000	C00063256			user instructions booklet gb-russo	
001	C00057816			top - white (shiny)	
002	C00044900			pilot lamp red	
003	C00063257			control panel + handle	
004	C00051882	1 C00044877		timer knob white 27.	
005	C00044820			t/stat or dryer knob white 27.	
007	C00044735			push button knob white giugiaro	
008	C00044769			worktop retainer	
009	C00057808			cabinet white 27	n1040030
010	C00056260	1 C00065185		bolt kfrfl tcbz 4.4 x 9 zcr (wg-80525)	
011	C00058929			door handle kit wgd	
012	C00057813			door frame and glass assy	
013	C00044736			plinth white giugiaro	
014	C00044819			clip	
015	C00002497			nut m4x3,2x7	
015	C00019845			bolt t 1/2 t m4x8	
015	C00019846			bolt t 1/2 t m4x12	
016	C00057567			hinge plate outer case (wg-80525)	
017	C00051723			foot	
018	C00046121			spring for foot mm d = 12.2	
020	C00003144			blanking plug 11mm	
023	C00050864			rear cover - white (shiny)	
099	C00058931			spacer pvc 32mm.'als'	

pdf_tavola_title_ENG

cod. 1150210

1150210



Spare parts list

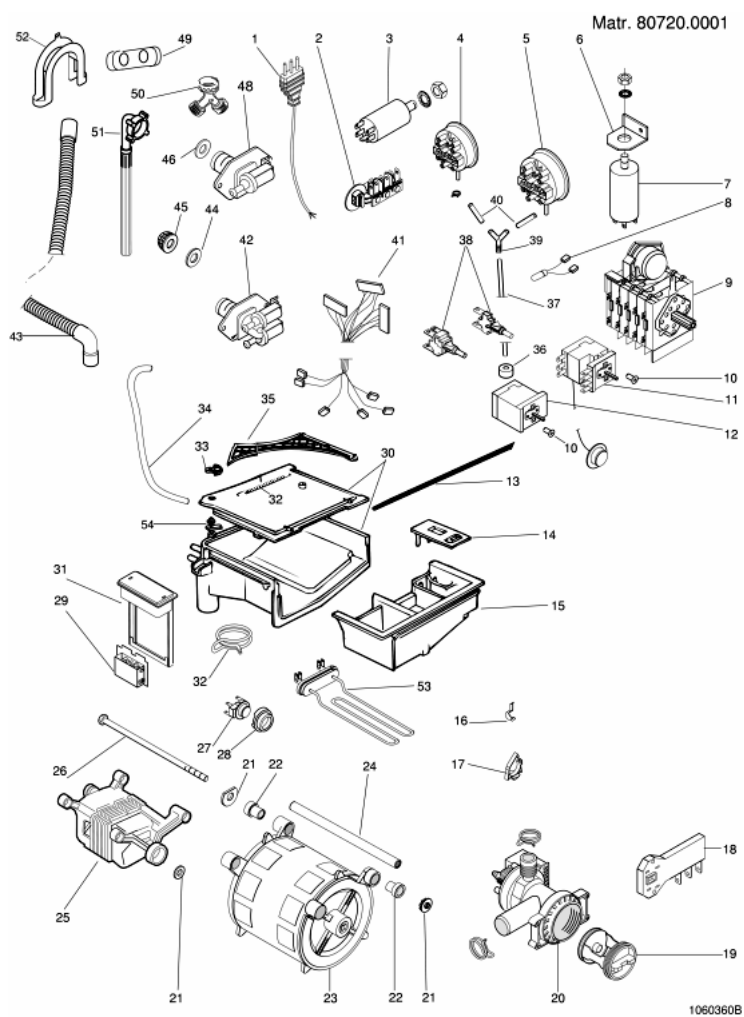
Spare parts list cod. 1150210

Ref.	Code	Substitute	Industrial code	Description	Notice
001	C00051739	1 C00064786		m8 x 20 tefl. 10.9 screw	
004	C00059721			belt l=1181/1187 mm h7	
005	C00059723			driven pulley d = 280 mm	
006	C00051736			torx m8 x 23 dri-loc screw	
007	C00050879			bearing spider assembly 1000 rpm	
008	C00051737			torx m8 x 27 dri-loc screw	
009	C00058384			outer tank inox	
010	C00051421			detergent recovery hose	n1040038,n1040038
010	C00064117			detergent recovery hose l=319 mm	n1040038,n1040038
010	C00064583			hose clamp 55	n1040038,n1040038
011	C00050880	1 C00065464		drum als	n1040048
011	C00065464			drum als-wgs	n1040048
012	C00023840			bolt m6 x 80 for clamping band tank front	
013	C00003018			clamping band tank front	
014	C00050865			tub front stainless	
016	C00051423			air trap	
017	C00051325			bellows seal als	
018	C00033041			clamping ring - bellows seal front 856mm	
019	C00036780			bellows clamp (tank front)	
020	C00037132			bolt + washer m4x12x1 (stainless)	
020	C00058523			pillar retainer-heating element	
022	C00027990			hose clamp 78-85 to tank	
022	C00051729			hose clamp 50-60 to tank	

023	C00051422		hose-tank to pump	
024	C00030443	1 C00047136	nut romob m8	
033	C00020941		seal - tank front inox	
034	C00023841		nut for clamping band tank front	
035	C00039667		oil seal bearing + spider/tank seal	
036	C00027923		hose dispenser to tank	
038	C00026298		bearing ba2b 633667 30x60.03x37	
039	C00026299		circlip 60 x 1.5	
041	C00058387		upper counterweight	
042	C00047136		nut romob m8	
043	C00037346		nylon washer	
044	C00015492		screw m8x80 t.t.l.	
045	C00053819		extractable beater	n1040048
045	C00065463		removable washing paddles 40 l	n1040048
046	C00050881		spider drum als	
048	C00038358		bolt m8x16 (dry loc)	
049	C00057809		washer	
050	C00060123		tank spring s/c	
051	C00019675		anchorage pad - suspension spring	
052	C00058388		lower counterweight	
053	C00058386		bolt m8 x 12060	
054	C00019849		washer 37x8,5x2	
056	C00030338		shock absorber support	
059	C00058389		shock absorber 120s40	
061	C00030446		bolt m10 x 45 zntr	
062	C00030680	1 C00040130	nut m 10	
099	C00025208		counterweight pad	

pdf_tavola_title_ENG

cod. 1150320



Spare parts list

Spare parts list cod. 1150320

Ref.	Code	Substitute	Industrial code	Description	Notice
001	C00024521			suply cable 3x1,5 nf	
001	C00064563			supply cable 3x1 schuko 1,5 m	
002	C00041163			terminal block	
003	C00043435			radio interference suppressor	
003	C00064559			radio interference suppressor	
004	C00059717			pressure swit.i/130-100 ii/225-120 iii/31	
006	C00008663			bracket - interference suppressor	
008	C00019749			indicator lamp	
009	C00054735			timer eaton ec 4684	
010	C00046664			bolt m4 x 6 tsp	
011	C00019650			adjustable thermostat	
013	C00047006			metal operating rod diverter	
014	C00044800			additive cover	
015	C00046423			detergent drawer (50410)	
017	C00046667			wiring stop	
018	C00059539			thermal door interlock	
019	C00045023			filter handle	
019	C00045025			filter seal	
019	C00045027			filter element kit	
020	C00050334			self cleaning pump 240v./50hz.	
021	C00002407			washer 6,4x13x1,5	
022	C00019682			rubber bush 20 mm - motor	
022	C00042897			rubber bush motor	

024	C00019965		spacer tube for motor support	
025	C00043430		tacho generator black for ice motor	
025	C00047317		brush for motor (ice)..940n2101/940n1i01	
025	C00059718		motor ice 850 rpm	
026	C00019964		motor bolt m6 x 212 te	
027	C00059719		thermostat 1t 40ø c na	
028	C00014917		grommet - thermostat	
029	C00051446	1 C00066454	digital module 5520 5520/u	n1040060
029	C00066454		digital module 5520 5520/u triac 12 a.	n1040060
030	C00046621		dispenser body + top	
032	C00019708		dispenser spring	
033	C00028569		diverter quadrant 19 teeth	
034	C00020880	1 C00015498	hose - valve/dispenser (hot)	
035	C00028568		diverter pivot arm 18 teeth	
036	C00019755		anti-vibration bush (foam)	
037	C00030388		pressure switch hose 450mm.	
038	C00058465		push button switch na+na on-off	
038	C00058466		switch nc	
038	C00059722		deviator switch nc+resistor 3 kohm	
041	C00059720		wiring - timer eaton ec 4684	
043	C00051738		outlet hose	
045	C00005781		inlet hose filter	
048	C00019734	1 C00104773	electrovalve 1 way 8 lt (cold)	n1040030
048	C00064046		electrovalve 1 way 8 lt (90504)	n1040030
049	C00051728		electrovalve support	
051	C00003070		mains inlet hose cold 25c 10bar 1500 mm	
052	C00019902		plastic -u- to make drain hose hook	
053	C00051730		heating element 1800w/230v +t.l.45ø	
054	C00021662		dispenser cold water	
099	C00052828		door seal hose clip bz 6140r	

Notices

n1040030

"Snella" washing machine cabinet modification

Beginning from serial no. 905043.0001, the valve support is obtained from the mould in the "Snella" washing machine cabinets produced in the Comunanza plant.

This modification entails the elimination of the plastic valve support code 051728 as well as the handling of two new valves that differ from the previous ones for the deeper fixing bracket (064045 double 7-liter valve and 064046 1E 1U 8-liter valve).

The new cabinets are interchangeable with the premodification ones only if the new valves are used.

n1040038

New detergent recovery hose in models produced in the Comunanza plant

Beginning from serial number 90607.0001 the washers and washer-dryers produced in the Comunanza plant have been using a new detergent recovery hose with code 064117 together with a new fixing clamp of 55 mm instead of 58 mm with code 064583.

The hose with code 051421 will be regularly managed for the Teverola appliances. In the Comunanza appliances it can be replaced with the new hose, but not vice versa.

n1040048

New drum with tumbler ALS-WGS.

Beginning with serial no. 90927.0001, ALS WGS 600-800 and 1000 washing machines from the Snella range make use of the drum part no.

065464 which uses the tumbler part no. 065463.

The new drum complete with tumbler can be used instead of the pre-modification one but not vice-versa.

The drum part no. 050880 will be handled until the stocks have run out, whereas the tumbler part no. 053819 will continue to be handled normally.

n1040060

Remco modules with 12 A Triac

Beginning with serial no. 00217.0001, the following modules with 12 A triac have been used on appliances produced at the Comunanza / Teverola factory:

Part no. 066454 - REMCO 5520

Part no. 066455 - REMCO 5521

Part no. 066456 - REMCO 5530

Part no. 066457 - REMCO 5531

The new modules can be used instead of the corresponding pre-modification modules, which will continue to be handled normally until stocks run out.

Part no. 051446 - REMCO 5520

Part no. 056332 - REMCO 5521

Part no. 053085 - REMCO 5530

Part no. 056333 - REMCO 5531.

n1040030

"Snella" washing machine cabinet modification

Beginning from serial no. 905043.0001, the valve support is obtained from the mould in the "Snella" washing machine cabinets produced in the Comunanza plant.

This modification entails the elimination of the plastic valve support code 051728 as well as the handling of two new valves that differ from the

previous ones for the deeper fixing bracket (064045 double 7-liter valve and 064046 1E 1U 8-liter valve).

The new cabinets are interchangeable with the premodification ones only if the new valves are used.

n1040038

New detergent recovery hose in models produced in the Comunanza plant

Beginning from serial number 90607.0001 the washers and washer-dryers produced in the Comunanza plant have been using a new detergent recovery hose with code 064117 together with a new fixing clamp of 55 mm instead of 58 mm with code 064583.

The hose with code 051421 will be regularly managed for the Teverola appliances. In the Comunanza appliances it can be replaced with the new hose, but not vice versa.

n1040048

New drum with tumbler ALS-WGS.

Beginning with serial no. 90927.0001, ALS WGS 600-800 and 1000 washing machines from the Snella range make use of the drum part no. 065464 which uses the tumbler part no. 065463.

The new drum complete with tumbler can be used instead of the pre-modification one but not vice-versa.

The drum part no. 050880 will be handled until the stocks have run out, whereas the tumbler part no. 053819 will continue to be handled normally.

n1040060

Remco modules with 12 A Triac

Beginning with serial no. 00217.0001, the following modules with 12 A triac have been used on appliances produced at the Comunanza / Teverola factory:

Part no. 066454 - REMCO 5520

Part no. 066455 - REMCO 5521

Part no. 066456 - REMCO 5530

Part no. 066457 - REMCO 5531

The new modules can be used instead of the corresponding pre-modification modules, which will continue to be handled normally until stocks run out.

Part no. 051446 - REMCO 5520

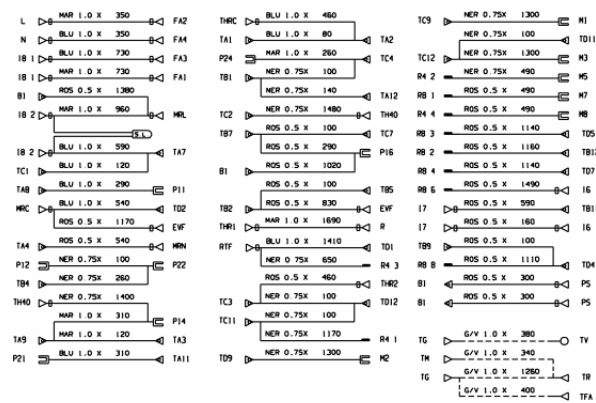
Part no. 056332 - REMCO 5521

Part no. 053085 - REMCO 5530

Part no. 056333 - REMCO 5531.

Electric schemes and links

Cod. ce000200



Legend

Legend: ce000200

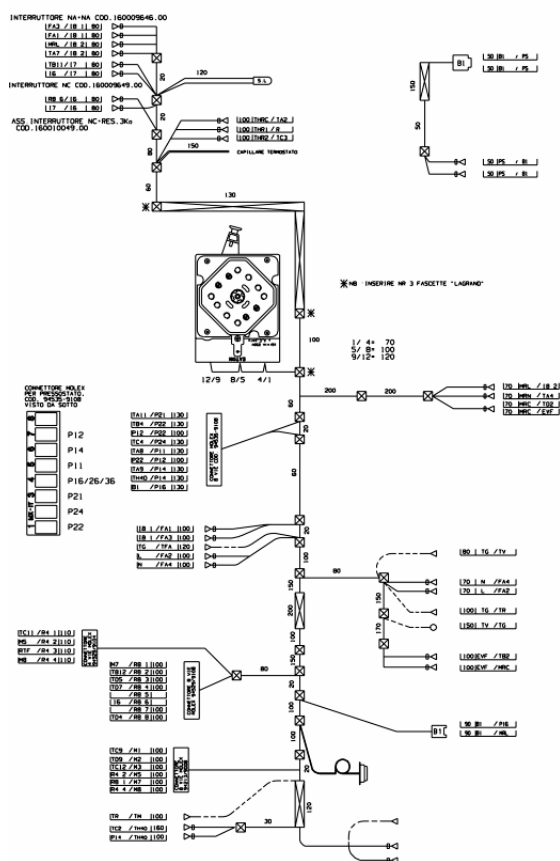
AQS	Aquastop electrovalve	Mzbn/MTA	zbn timer motor
B	Buzzer	N	Neutral or Terminal Board
BC		NC	Spin cycle exclusion
BF	Terminal board contact, motor fan and dryer heating	P	Pressure switch
BP	Buzzer	PA	High speed potentiometer
C	Condensator	PB	Low speed potentiometer
CA	Condensator	PL	Pure Wool
DV	Switching device	PM	Motor Thermoprotector
EF/CL	Electro-Valve Cold Water / Bleach	PR	Timer programmer or Pressure switch
EF/L	Electro-Valve Cold Water / Wash	PS	Drain pump
EF/P	Electro-Valve Cold Water / Prewash	P1	1st level pressure cut-off switch
ER	Exclude Heating Element	P2	2nd level pressure cut-off switch
ET	Thermostat disactivation	R	Heating element
EV	Electrovalve	Ras/RA	Dryer heating element
EVA	Dryer electrovalve	RE	Relay
EVC	Hot water electrovalve	RR	Heating element
EVF	Elettrovalvola acqua fredda	RV	Speed regulator
EVL	Wash electrovalve	S	LED
EVP	Pre Wash electrovalve	SL	Line LED
FA	Antijamming filter	SO	Door LED
FD	Delicate drying cycle thermostat	SR	Heating LED
FE	Strong drying cycle thermostat	ST	Temperature selector
FRT	Thermofusible Heating Element	SV	Speed Selector for Spin
I	Inverter	T	Timer contacts
IA	Switch On/Off	TA	Drying timer contacts

IC	Switch N.C. - 1/2 Load	TB	Low Temperature Thermostat
ID	Switch display	TC	Spider wheel earth
IE	Water Saving Device	TFL	Flange earth
IF	Switch - Spin Reduction	TG	Main earth
IP	Door switch	TH	Thermostat
IR	Line switch	THF	Operating thermostat
IS	Water-stop	THR	Adjustable thermostat
I1..2..3..	Switches/switching devices	TH1	1st temperature thermostat
L	Line or Lamp	TH2	2nd temperature thermostat
LB	Low Level	TH3	3rd temperature thermostat
LN	Normal Level	TM	Motor earth
LS	Pilot lamp	TMB	Main cabinet earth
M	Earth-symbol	TMP	Motor thermal protector
MC	Spin cycle motor	TMS	Thermostop
MI	MOTOR WITH PULLEY	TP	Thermal protector
ML	Wash cycle motor	TPS	Drain pump earth
MO	Terminal Board	TR	Heating element earth
MP	Door dip-switch	TS	Safety thermostat
MR	Thermal Lock	TT	Timer earthing connection
MT	Timer motor	TTH	Earthing Thermostat
MV	Motor fan	TV	Tank earth
MV -Ras	Dryer heating element	ZBN	Timer

Electric schemes and links

Cod. se000600

SE000600



Legend

Legend: se000600

AQS	Aquastop electrovalve	Mzbn/MTA	zbn timer motor
B	Buzzer	N	Neutral or Terminal Board
BC		NC	Spin cycle exclusion
BF	Terminal board contact, motor fan and dryer heating	P	Pressure switch
BP	Buzzer	PA	High speed potentiometer
C	Condensator	PB	Low speed potentiometer
CA	Condensator	PL	Pure Wool
DV	Switching device	PM	Motor Thermoprotector
EF/CL	Electro-Valve Cold Water / Bleach	PR	Timer programmer or Pressure switch
EF/L	Electro-Valve Cold Water / Wash	PS	Drain pump
EF/P	Electro-Valve Cold Water / Prewash	P1	1st level pressure cut-off switch
ER	Exclude Heating Element	P2	2nd level pressure cut-off switch
ET	Thermostat disactivation	R	Heating element
EV	Electrovalve	Ras/RA	Dryer heating element
EVA	Dryer electrovalve	RE	Relay
EVC	Hot water electrovalve	RR	Heating element
EVF	Elettrovalvola acqua fredda	RV	Speed regulator
EVL	Wash electrovalve	S	LED
EVP	Pre Wash electrovalve	SL	Line LED
FA	Antijamming filter	SO	Door LED
FD	Delicate drying cycle thermostat	SR	Heating LED
FE	Strong drying cycle thermostat	ST	Temperature selector
FRT	Thermofusible Heating Element	SV	Speed Selector for Spin
I	Inverter	T	Timer contacts
IA	Switch On/Off	TA	Drying timer contacts

IC	Switch N.C. - 1/2 Load	TB	Low Temperature Thermostat
ID	Switch display	TC	Spider wheel earth
IE	Water Saving Device	TFL	Flange earth
IF	Switch - Spin Reduction	TG	Main earth
IP	Door switch	TH	Thermostat
IR	Line switch	THF	Operating thermostat
IS	Water-stop	THR	Adjustable thermostat
I1..2..3..	Switches/switching devices	TH1	1st temperature thermostat
L	Line or Lamp	TH2	2nd temperature thermostat
LB	Low Level	TH3	3rd temperature thermostat
LN	Normal Level	TM	Motor earth
LS	Pilot lamp	TMB	Main cabinet earth
M	Earth-symbol	TMP	Motor thermal protector
MC	Spin cycle motor	TMS	Thermostop
MI	MOTOR WITH PULLEY	TP	Thermal protector
ML	Wash cycle motor	TPS	Drain pump earth
MO	Terminal Board	TR	Heating element earth
MP	Door dip-switch	TS	Safety thermostat
MR	Thermal Lock	TT	Timer earthing connection
MT	Timer motor	TTH	Earthing Thermostat
MV	Motor fan	TV	Tank earth
MV -Ras	Dryer heating element	ZBN	Timer

Electric schemes and links

Cod. 111279a

LINE POSITIONS	OPERATIONS	INITIAL PROGRAMME	TEMPERATURE WASH	LEVELS	WASHING	IMPULSE																
							HEAT	HEAT	DOOR BLOCK	2 LEVEL	1 LEVEL	DOOR OPEN	VACUUM TUMBLER	DRAIN PUMPE	HEAT EY	SPIN	GO TH AW	TIMER DIRECT	DRAIN PUMPE OFZ	ENDSTOP	FRONT	DISTRIBUTION
1	COLD FILL TUMBLE + HEAT	1	50°	1	1	1	1	1	1	1	1	1	1	1	1	1	1	1	1	1	1	1
2	COLD FILL TUMBLE + HEAT	2	50°	1	1	1	1	1	1	1	1	1	1	1	1	1	1	1	1	1	1	1
3	DRAIN + DISTRT.	3	50°	1	1	1	1	1	1	1	1	1	1	1	1	1	1	1	1	1	1	1
4	HOT FILL TUMBLE	4	50°	1	1	1	1	1	1	1	1	1	1	1	1	1	1	1	1	1	1	1
5	HOT FILL TUMBLE + HEAT	5	50°	1	1	1	1	1	1	1	1	1	1	1	1	1	1	1	1	1	1	1
6	HOT FILL TUMBLE + HEAT	6	50°	1	1	1	1	1	1	1	1	1	1	1	1	1	1	1	1	1	1	1
7	HOT FILL TUMBLE + HEAT	7	50°	1	1	1	1	1	1	1	1	1	1	1	1	1	1	1	1	1	1	1
8	HOT FILL TUMBLE + HEAT	8	50°	1	1	1	1	1	1	1	1	1	1	1	1	1	1	1	1	1	1	1
9	HOT FILL TUMBLE + HEAT	9	50°	1	1	1	1	1	1	1	1	1	1	1	1	1	1	1	1	1	1	1
10	HOT FILL TUMBLE + HEAT	10	50°	1	1	1	1	1	1	1	1	1	1	1	1	1	1	1	1	1	1	1
11	HOT FILL TUMBLE + HEAT	11	50°	1	1	1	1	1	1	1	1	1	1	1	1	1	1	1	1	1	1	1
12	BLUNDER FILL TUMBLE + HEAT	12	50°	1	1	1	1	1	1	1	1	1	1	1	1	1	1	1	1	1	1	1
13	BLUNDER FILL TUMBLE + HEAT	13	50°	1	1	1	1	1	1	1	1	1	1	1	1	1	1	1	1	1	1	1
14	COLD FILL TUMBLE + HEAT	14	50°	1	1	1	1	1	1	1	1	1	1	1	1	1	1	1	1	1	1	1
15	COLD FILL TUMBLE + HEAT	15	50°	1	1	1	1	1	1	1	1	1	1	1	1	1	1	1	1	1	1	1
16	BLUNDER FILL TUMBLE + HEAT	16	50°	1	1	1	1	1	1	1	1	1	1	1	1	1	1	1	1	1	1	1
17	COLD FILL TUMBLE	17	50°	1	1	1	1	1	1	1	1	1	1	1	1	1	1	1	1	1	1	1
18	COLD FILL TUMBLE	18	50°	1	1	1	1	1	1	1	1	1	1	1	1	1	1	1	1	1	1	1
19	COLD FILL TUMBLE	19	50°	1	1	1	1	1	1	1	1	1	1	1	1	1	1	1	1	1	1	1
20	PAUSE	20	50°	1	1	1	1	1	1	1	1	1	1	1	1	1	1	1	1	1	1	1
21	COOLER + TUMBLE	21	50°	1	1	1	1	1	1	1	1	1	1	1	1	1	1	1	1	1	1	1
22	DRAIN + DISTRT.	22	50°	1	1	1	1	1	1	1	1	1	1	1	1	1	1	1	1	1	1	1
23	DRAIN + IMP. SPIN	23	50°	1	1	1	1	1	1	1	1	1	1	1	1	1	1	1	1	1	1	1
24	COLD FILL TUMBLE	24	50°	1	1	1	1	1	1	1	1	1	1	1	1	1	1	1	1	1	1	1
25	COLD FILL TUMBLE	25	50°	1	1	1	1	1	1	1	1	1	1	1	1	1	1	1	1	1	1	1
26	DRAIN + DISTRT.	26	50°	1	1	1	1	1	1	1	1	1	1	1	1	1	1	1	1	1	1	1
27	COLD FILL TUMBLE	27	50°	1	1	1	1	1	1	1	1	1	1	1	1	1	1	1	1	1	1	1
28	COLD FILL TUMBLE	28	50°	1	1	1	1	1	1	1	1	1	1	1	1	1	1	1	1	1	1	1
29	DRAIN + DISTRT.	29	50°	1	1	1	1	1	1	1	1	1	1	1	1	1	1	1	1	1	1	1
30	DRAIN + IMP. SPIN	30	50°	1	1	1	1	1	1	1	1	1	1	1	1	1	1	1	1	1	1	1
31	COLD FILL TUMBLE	31	50°	1	1	1	1	1	1	1	1	1	1	1	1	1	1	1	1	1	1	1
32	DRAIN + DISTRT.	32	50°	1	1	1	1	1	1	1	1	1	1	1	1	1	1	1	1	1	1	1
33	DRAIN + IMP. SPIN	33	50°	1	1	1	1	1	1	1	1	1	1	1	1	1	1	1	1	1	1	1
34	COLD FILL TUMBLE	34	50°	1	1	1	1	1	1	1	1	1	1	1	1	1	1	1	1	1	1	1
35	DRAIN + DISTRT.	35	50°	1	1	1	1	1	1	1	1	1	1	1	1	1	1	1	1	1	1	1
36	DRAIN + IMP. SPIN	36	50°	1	1	1	1	1	1	1	1	1	1	1	1	1	1	1	1	1	1	1
37	DRAIN + HEAVY SPEED SPIN	37	50°	1	1	1	1	1	1	1	1	1	1	1	1	1	1	1	1	1	1	1
38	STOP	38	50°	1	1	1	1	1	1	1	1	1	1	1	1	1	1	1	1	1	1	1
39	HOT FILL TUMBLE + HEAT	39	50°	1	1	1	1	1	1	1	1	1	1	1	1	1	1	1	1	1	1	1
40	BLUNDER FILL TUMBLE + HEAT	40	50°	1	1	1	1	1	1	1	1	1	1	1	1	1	1	1	1	1	1	1
41	COLD FILL TUMBLE + HEAT	41	50°	1	1	1	1	1	1	1	1	1	1	1	1	1	1	1	1	1	1	1
42	COLD FILL TUMBLE + HEAT	42	50°	1	1	1	1	1	1	1	1	1	1	1	1	1	1	1	1	1	1	1
43	COLD FILL TUMBLE + HEAT	43	50°	1	1	1	1	1	1	1	1	1	1	1	1	1	1	1	1	1	1	1
44	COLD FILL TUMBLE + HEAT	44	50°	1	1	1	1	1	1	1	1	1	1	1	1	1	1	1	1	1	1	1
45	COLD FILL TUMBLE + HEAT	45	50°	1	1	1	1	1	1	1	1	1	1	1	1	1	1	1	1	1	1	1
46	COLD FILL TUMBLE	46	50°	1	1	1	1	1	1	1	1	1	1	1	1	1	1	1	1	1	1	1
47	COLD FILL TUMBLE	47	50°	1	1	1	1	1	1	1	1	1	1	1	1	1	1	1	1	1	1	1
48	DRAIN FILL TUMBLE	48	50°	1	1	1	1	1	1	1	1	1	1	1	1	1	1	1	1	1	1	1
49	COLD FILL TUMBLE	49	50°	1	1	1	1	1	1	1	1	1	1	1	1	1	1	1	1	1	1	1
50	DRAIN	50	50°	1	1	1	1	1	1	1	1	1	1	1	1	1	1	1	1	1	1	1
51	COLD FILL TUMBLE	51	50°	1	1	1	1	1	1	1	1	1	1	1	1	1	1	1	1	1	1	1
52	DRAIN	52	50°	1	1	1	1	1	1	1	1	1	1	1	1	1	1	1	1	1	1	1
53	COLD FILL TUMBLE	53	50°	1	1	1	1	1	1	1	1	1	1	1	1	1	1	1	1	1	1	1
54	DRAIN	54	50°	1	1	1	1	1	1	1	1	1	1	1	1	1	1	1	1	1	1	1
55	COLD FILL TUMBLE	55	50°	1	1	1	1	1	1	1	1	1	1	1	1	1	1	1	1	1	1	1
56	DRAIN	56	50°	1	1	1	1	1	1	1	1	1	1	1	1	1	1	1	1	1	1	1
57	COLD FILL TUMBLE	57	50°	1	1	1	1	1	1	1	1	1	1	1	1	1	1	1	1	1	1	1
58	DRAIN + DISTRT.	58	50°	1	1	1	1	1	1	1	1	1	1	1	1	1	1	1	1	1	1	1
59	DRAIN + IMP. SPIN	59	50°	1	1	1	1	1	1	1	1	1	1	1	1	1	1	1	1	1	1	1
60	DRAIN	60	50°	1	1	1	1	1	1	1	1	1	1	1	1	1	1	1	1	1	1	1
61	STOP	61	50°	1	1	1	1	1	1	1	1	1	1	1	1	1	1	1	1	1	1	1

Legend

Legend: 111279a

AQS	Aquastop electrovalve	Mzbn/MTA	zbn timer motor
B	Buzzer	N	Neutral or Terminal Board
BC		NC	Spin cycle exclusion
BF	Terminal board contact, motor fan and dryer heating	P	Pressure switch
BP	Buzzer	PA	High speed potentiometer
C	Condensator	PB	Low speed potentiometer
CA	Condensator	PL	Pure Wool
DV	Switching device	PM	Motor Thermoprotector
EF/CL	Electro-Valve Cold Water / Bleach	PR	Timer programmer or Pressure switch
EF/L	Electro-Valve Cold Water / Wash	PS	Drain pump
EF/P	Electro-Valve Cold Water / Prewash	P1	1st level pressure cut-off switch
ER	Exclude Heating Element	P2	2nd level pressure cut-off switch
ET	Thermostat disactivation	R	Heating element
EV	Electrovalve	Ras/RA	Dryer heating element
EVA	Dryer electrovalve	RE	Relay
EVC	Hot water electrovalve	RR	Heating element
EVF	Elettrovalvola acqua fredda	RV	Speed regulator
EVL	Wash electrovalve	S	LED
EVP	Pre Wash electrovalve	SL	Line LED
FA	Antijamming filter	SO	Door LED
FD	Delicate drying cycle thermostat	SR	Heating LED
FE	Strong drying cycle thermostat	ST	Temperature selector
FRT	Thermofusible Heating Element	SV	Speed Selector for Spin
I	Inverter	T	Timer contacts
IA	Switch On/Off	TA	Drying timer contacts

IC	Switch N.C. - 1/2 Load	TB	Low Temperature Thermostat
ID	Switch display	TC	Spider wheel earth
IE	Water Saving Device	TFL	Flange earth
IF	Switch - Spin Reduction	TG	Main earth
IP	Door switch	TH	Thermostat
IR	Line switch	THF	Operating thermostat
IS	Water-stop	THR	Adjustable thermostat
I1..2..3..	Switches/switching devices	TH1	1st temperature thermostat
L	Line or Lamp	TH2	2nd temperature thermostat
LB	Low Level	TH3	3rd temperature thermostat
LN	Normal Level	TM	Motor earth
LS	Pilot lamp	TMB	Main cabinet earth
M	Earth-symbol	TMP	Motor thermal protector
MC	Spin cycle motor	TMS	Thermostop
MI	MOTOR WITH PULLEY	TP	Thermal protector
ML	Wash cycle motor	TPS	Drain pump earth
MO	Terminal Board	TR	Heating element earth
MP	Door dip-switch	TS	Safety thermostat
MR	Thermal Lock	TT	Timer earthing connection
MT	Timer motor	TTH	Earthing Thermostat
MV	Motor fan	TV	Tank earth
MV -Ras	Dryer heating element	ZBN	Timer