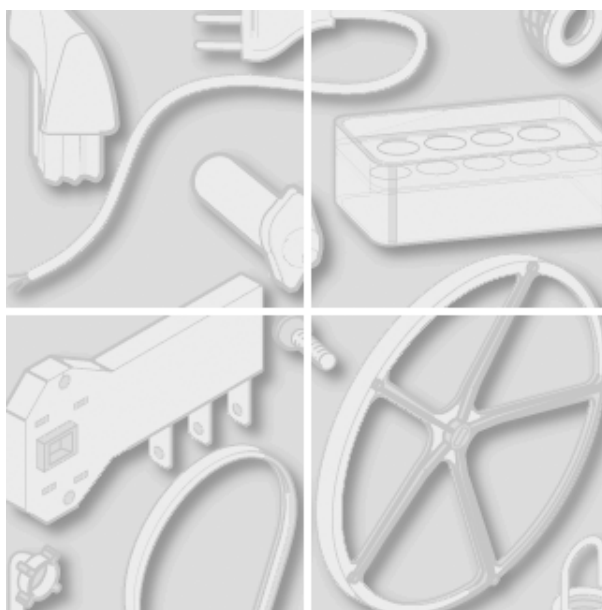


**Merloni Elettrodomestici**



Model type:  
LS605STU

Commercial code:  
10850

## General notes

### Technical Documentation guidelines

---

You can find herewith some generic information to simplify consulting of technical documentation:

1. Models of same range share the same exploded views, which report the richest set of spare parts: generally, a model does not necessarily have a related spare part for each particular shown on exploded views.

2. Some spare parts can not be represented directly on the exploded views (instruction booklets, specific kit, etc...). You can find those codes in the spare parts list with the same reference of particular where spares are installed or with references 099, 999. Instruction booklets, once managed, appear with 000 reference.

3. On the higher right site of each exploded view there is a serial number which indicates the beginning of the production of certain range: some models might have more than an exploded view for a given category, each distinguished by a different serial no. and linked to another spare parts list. In this case, serial no. is required to supply the right spare part code. Exploded view to be considered is the one with a more recent serial no. but previous than the one of the model that needs assistance.

4. Exploded views might require further updates even after publishing. Addition of new spares will go on following the already existing numeration references. Revision number of an exploded view is shown into last four digits of serial number into upper right hand corner.

5. The spare parts list associated to an exploded view shows related codes of spares managed for a certain model; for each spare part other informations are available:

REF: reference no of spare into a table; SUBSTITUTE: list of spare(s) which can replace a code but that keeps same functional characteristics

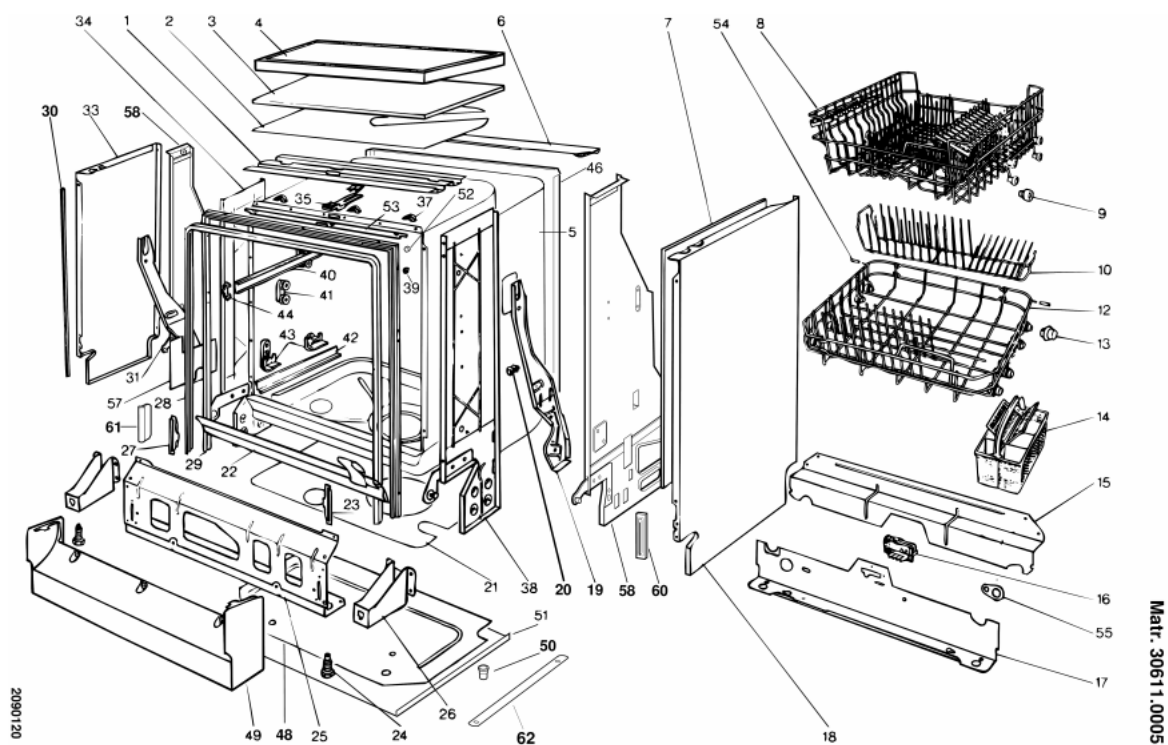
INDUSTRIAL CODE: list of variables of a model (shown into model label) where such spare is used; NOTICE: code of information(s) to refer to complete technical intervention, track for changes or to find correct spare part code.

6. Some notices, into a same section are generic therefore cannot be directly linked to a spare part. In order to assist a model in the best way as possible, it is helpful to pay attention to all notices and constantly verify documentation updates

7. Technical documentation cover shows model name and its commercial codes

pdf\_tavola\_title\_ENG

cod. 2090120



Matr. 30611.0005

**Spare parts list**

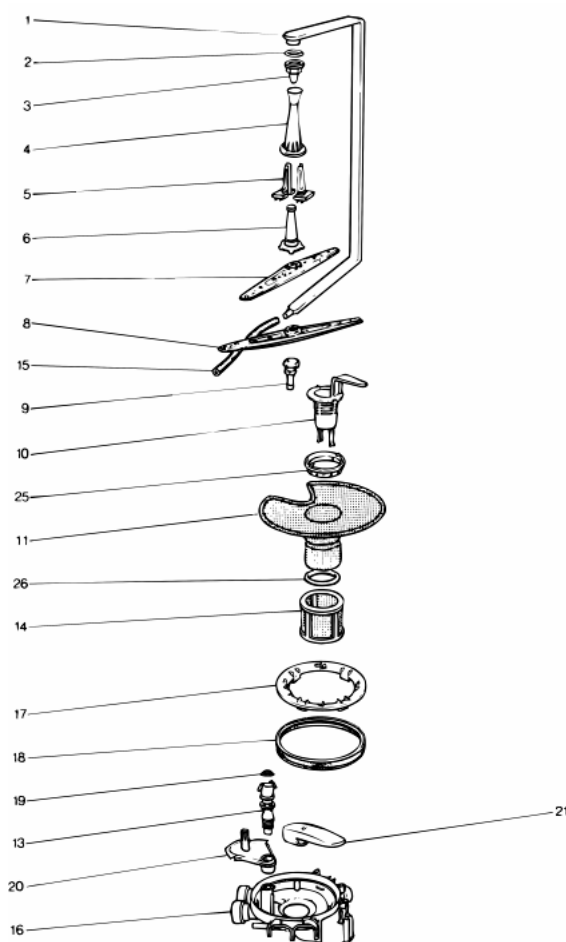
Spare parts list cod. 2090120

Ref.	Code	Substitute	Industrial code	Description	Notice
000	C00045762	1 C00042961		user instructions	
001	C00040971			upper support - front	
004	C00041236	3 C00044607,1 C00050940		top cover - white	0209033,0209033
004	C00050940			top cover - white	0209033,0209033
006	C00033591			rear support - top	
008	C00041259	1 C00048158		upper basket	
009	C00040994			roller - upper basket	
009	C00104638			upper basket roller axis	
010	C00049688			plate rack insert (lower rack)	
012	C00103276	1 C00044825		lower basket	
013	C00040993			roller - lower basket (pivot pin = 104638	
014	C00103279	1 C00048182		cutlery basket	
015	C00040986			rear support - middle	
016	C00040987			terminal block	n1045044
017	C00041766			lower rear support	
018	C00040975	1 C00041470		side panel right - white	
019	C00040976			side support - rear rh	
022	C00041213	1 C00056475		door seal - bottom (kit)	n1045035
023	C00042833			hinge guide plastic rh - white	
025	C00040982			front support - lower	
026	C00041254			foot support	
027	C00042832			hinge guide plastic lh - white	
028	C00033582			door seal - top and sides	

029	C00033594		frame kit - door seal	
030	C00041528		support (door seal) ? - top	
030	C00041529		edge trim - rh side panel	
030	C00041530		edge trim - lh side panel	
031	C00040977		side support - rear lh	
033	C00040974	1 C00041470	side panel left - white	
034	C00040970		side support - front lh	0209021
035	C00039342		catch plate (cabinet)	
037	C00044607		hook - top cover retention	0209033,0209033
037	C00103930		hook - top cover retention	0209033,0209033
038	C00040983		side support - front rh	0209021
040	C00033576		basket runner - upper	
041	C00106609		runner support - upper	
042	C00033596		basket runner - lower	
043	C00104282	1 C00104281	rear support lh/rh -lower runner	
043	C00104283		front support rh - lower runner	
043	C00104284		front support lh - lower runner	
044	C00040996		runner stop - upper basket	
049	C00041262		plinth panel white	0209016,0209016
049	C00046908		plinth panel white 27	0209016,0209016
051	C00042307		tray	
052	C00037247		door spacer	
053	C00040995		edge cover white	
054	C00040992		sleeve - basket stop pin	
055	C00040989		hoses bush	
058	C00048283		side support - front lh	0209025,0209025,0209025, 0209025,0209021,0209021,
058	C00048284		side support - front rh	0209025,0209025,0209025, 0209025,0209021,0209021,
058	C00049681	1 C00050169	side support - front rh	0209025,0209025,0209025, 0209025,0209021,0209021,
058	C00049682	1 C00050169	side support - front lh	0209025,0209025,0209025, 0209025,0209021,0209021,
058	C00050169		kit support - front lh	0209025,0209025,0209025, 0209025,0209021,0209021,
060	C00048287		ferodo boss	0209025,0209021
061	C00050538		protection (hinge guide) - white 27	

pdf\_tavola\_title\_ENG

cod. 2090220



Matr. 30611.0001

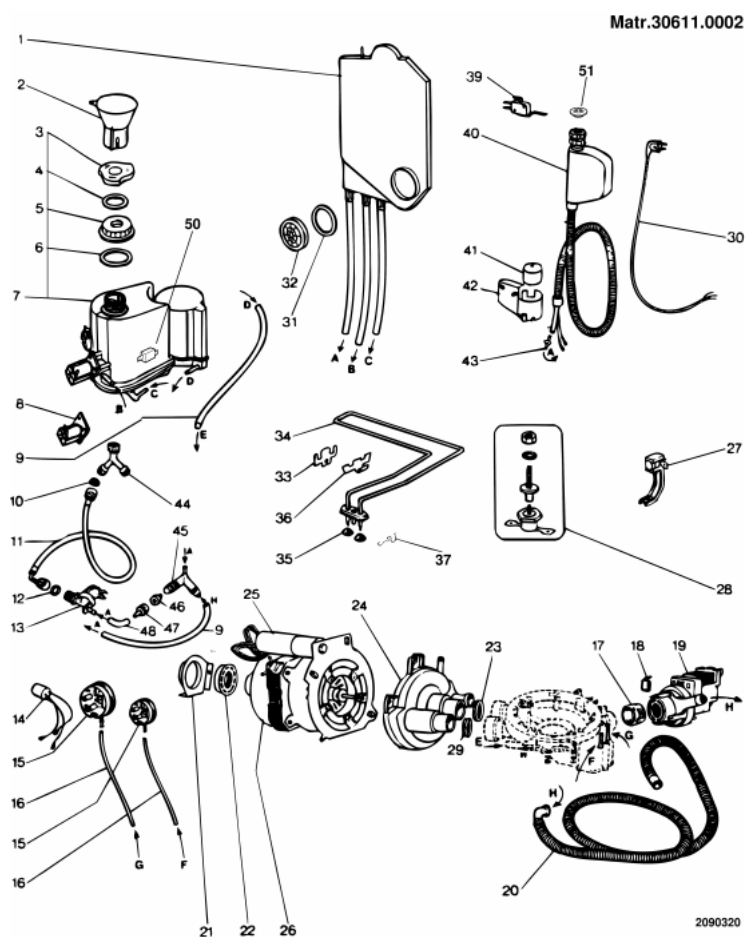
**Spare parts list**

Spare parts list cod. 2090220

Ref.	Code	Substitute	Industrial code	Description	Notice
001	C00041017			upper wash arm feed pipe	
002	C00075686			jet gasket (31.42x2.62)	
002	C00103689	1 C00084600		jet gasket	
003	C00041030			water jet - upper	
004	C00041031			upper wash arm feed funnel	
005	C00041032			upper wash arm support	
006	C00041033			bush - upper wash arm	
007	C00041034			upper wash arm	
008	C00103729	1 C00048202		lower wash arm	
009	C00041035			bush - lower wash arm	
010	C00045479			central filter basket/retainer-plastic	
011	C00041481			sump filter tray - stainless	
013	C00041044			support - lower wash arm bush	
014	C00041039			outer fine filter cylinder	
015	C00042391			pump junction pipe	
016	C00041046			sump	
017	C00041040			sump fixing ring	
018	C00041041			gasket - sump fixing ring	
019	C00041043			support washer	
020	C00041047			sump filter support plate	
021	C00041045			suction pipe coupling	
025	C00041487			filter ring stainless	
026	C00103605			microfilter gasket	

pdf\_tavola\_title\_ENG

cod. 2090320





**Spare parts list**

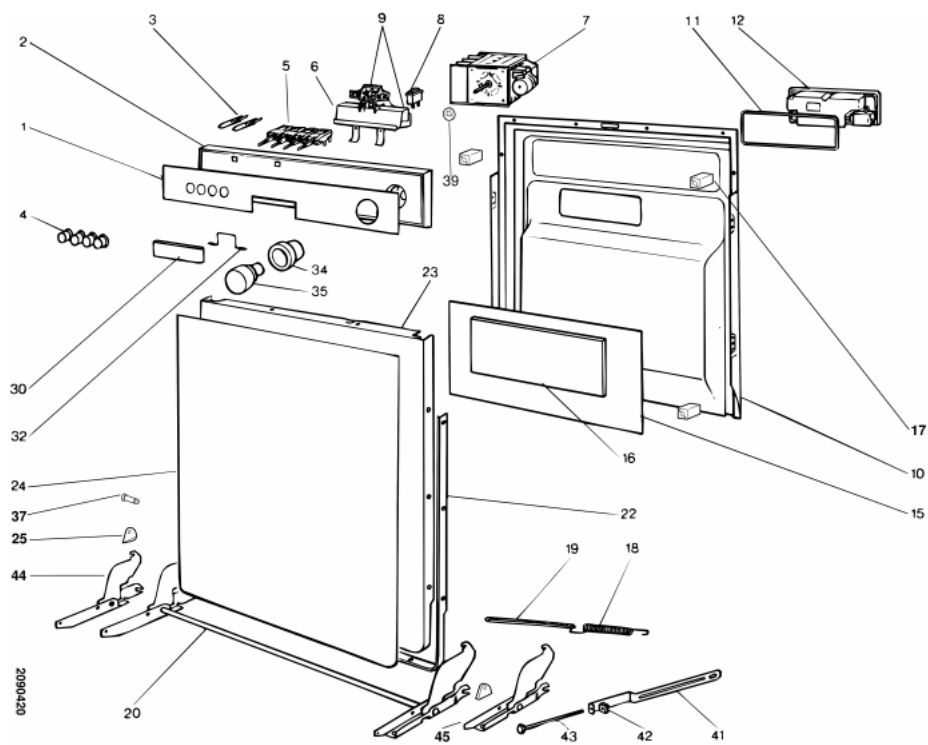
Spare parts list cod. 2090320

Ref.	Code	Substitute	Industrial code	Description	Notice
001	C00041084			water inlet air break	
002	C00005819			salt funnel	
003	C00041088			salt cap	
004	C00041089	1 C00041088		seal - salt cap	
005	C00041090			retaining ring - softener	
006	C00103610			seal - softener/wash chamber	
007	C00041484			water softener (adjustable) + electrovalv	0209015,0209015
007	C00042323			water hardness test strips	0209015,0209015
007	C00046992			water softener (hard+++) assy+electrovalv	0209015,0209015
008	C00033618			electrovalve (water softener)	
009	C00041085			tube - softener/sump	
012	C00005572			sealing washer-mains inlet hose	
014	C00041092			radio interference suppressor	
014	C00076659			radio interference suppressor	
015	C00041094			pressure switch 2 levels	0209027,0209027
015	C00041095			pressure switch 1 level	0209027,0209027
015	C00048306			pressure switch 2 level	0209027,0209027
016	C00041096	1 C00103833		tube 840mm - pressure switch	
016	C00041097	1 C00041096,1 C00103833		pressure switch tube 420mm	
017	C00041102			seal - drain pump	
019	C00041100	1 C00044712		drain pump 220-240v/50hz	
020	C00041101			drain hose - to sink/plumbing	
021	C00041098			support bracket - wash motor	

022	C00041099	anti vibration ring-wash motor	
023	C00041104	seal - pump/sump suction pipe	
024	C00041105	wash pump assy	0209008
025	C00105360	capacitor 5mf	
026	C00041106	wash motor/pump assy 220v-50/60hz (kit)	0209008
027	C00041251	thermostat 55øna/65øna +bracket	
027	C00041531	thermostat 45ø na	
028	C00041086	thermostat safety 78ønc	
029	C00041103	seal - pump/sump wash arm feed pipe	
030	C00033616	supply cable	
031	C00033620	seal - water inlet chamber/wash chamber	
032	C00033619	retaining ring - air break	
033	C00041107	support bracket - heating element	
034	C00042838	heating element 2400w/220v	
035	C00033615	terminal protection - heating element	
036	C00041108	support bracket - heating element	
039	C00037205	microswitch	
040	C00037207	inlet hose std antioverflow l 1930 mm	
041	C00037216	float - overflow unit	
042	C00037217	container - overflow unit	
043	C00037210	connection spout - overflow unit	
050	C00043737	switch - salt light (eledro)	
050	C00043740	switch - salt light (tecnoplastica)	
051	C00048941	sealing washer + filter	

pdf\_tavola\_title\_ENG

cod. 2090420



Matr. 30611.0001

**Spare parts list**

Spare parts list cod. 2090420

Ref.	Code	Substitute	Industrial code	Description	Notice
002	C00042949			dashboard white	
003	C00039456	1 C00045466		red pilot lamp	
004	C00039340			push-button - white 27	
005	C00041184			push button switch on/off(no+no)	
005	C00041261			push button switch (change over)	
005	C00041469			push button switch plus (no+change over)	
005	C00042126			pushbutton switch nc+no+change over	
006	C00044653			handle - white 27	
007	C00041514			timer eaton ec 4327.02	0209027,0209027,0209035
007	C00041532			timer bracket	0209027,0209027,0209035
007	C00042966			harness eaton ec4327.02	0209027,0209027,0209035
007	C00049746			harness eaton ec4327.02	0209027,0209027,0209035
008	C00041194			microswitch	
009	C00041239	1 C00048970		door catch mechanism assy - white	
010	C00044841			inner door panel (rectang. hole)-stainles	
011	C00033637			gasket - detergent/rinse aid dispenser	
012	C00051755			cap-rinse aid electrodispenser eltek/?	
012	C00104789			detergent+rinseaid electrodispenser	
015	C00041178			door damping pad	
016	C00033630			door soundproofing	
017	C00043820			fixing nut	
018	C00041260			hinge spring	
019	C00041186			adjustment lever - door spring	

020	C00041128		hinge assembly	0209025,0209025
020	C00049685		hinge assembly	0209025,0209025
022	C00041293		door decor frame - white	
023	C00041234	1 C00041536	outer door panel - white 27	
025	C00044083		hinge packing -triangular plastic	0209025
030	C00041288		handle cover flap - white 27	
032	C00039470		spring - handle cover	
034	C00041526		knob disc timer white	
035	C00039473		knob mechanism push-push	
035	C00039483		timer knob white push-push	
035	C00040221		spring push-push	
037	C00048504		hinge pin	0209025

## Notices

### **n1045035**

#### **Lower gasket kit for Dishwasher LVS2000 tub.**

---

On "LVS\_2000" Dishwasher models, in the event of intervention for the replacement of the tub lower gasket, it is necessary to cut the old gasket flush with the door and use the Kit 056475 "LOWER GASKET KIT FOR TUB ON 'LVS 2000'" which is fixed to the Tub with some springs attached.

### **n1045044**

#### **Changes to the terminal board of input cable of Dish-washer**

---

New parts have been introduced on some models of Dishwashers, regarding a change of the input cable that does not have more the terminal board cod. 040987 and that introduces a new connection with a anti-jamming filter cod. 076659.

To introduce these new harnesses, the back and lower cross arms have been changed, too.

The new codes are the more recent ones with a numerical index. In case of intervention, the new code has to be substituted with the new one and the old code has been substituted with the old one

### **0209008**

#### **IMPROVED SEAL IN REPLACING DISHWASHER MOTOR**

---

If it is necessary to replace motor code 041106-041747 or even just the pump code 041105, remember that it will be necessary to replace the exhaust pipe gasket code 041104 and the bottom pipe gasket code 041103.

Only in this way can a perfect seal be guaranteed between the pump and dishwasher sump.

## **0209015**

### **SPECIAL ADJUSTABLE DECALCIFIER - ELEDRO**

---

A special water softener that resolves the problem of hard water is available from the M.C.R. (Centralised

Spare Parts Warehouse) under SAT Code 046992.

High reticulation resins are used that permit softening hard water above 70 French degrees.

The part can only be mounted on the "Nuova

Aristella" models.

## **0209016**

### **NEW BASE ON FREE-STANDING MODELS**

---

As from serial no. 50608.0001 a new white moulding

code 046908 and a new black moulding code 047310 only for models LS603X, LS603XA, are mounted on all free standing Aristella one-door dishwasher models.

The new parts are not interchangeable with premodification parts that will continue to be available as usual.

## **0209021**

### **NEW POST ASSEMBLIES + FRICTION PAD**

---

As from serial no. 51209.0001 new front uprights and ferode plug are installed on free standing dishwashers.

The codes of the new parts are as follows:

Code 048283 - LH front upright unit;

Code 048284 - RH front upright unit;

Code 048287 - Ferode plug;

The new parts are not individually interchangeable with the premodification parts which will continue to be supplied (code

040970 LH front reinforcement, code 040983 RH front reinforcement).

## **0209025**

## **POST ASSEMBLY/HINGE ASSEMBLY/HINGE PIN**

---

As from serial no. 60519.0001 the front upright units and the hinge unit have been modified on all free standing dishwasher models.

A new hinge pin has also been fitted.

(NB The ferode plug code 048287 has not been changed).

The codes of the new parts are as follows:

- Code 049681 - RH front upright unit;
- Code 049682 - LH front upright unit;
- Code 049685 - Hinge unit;
- Code 048504 - Hinge pin;

The new parts are not individually interchangeable with the premodification parts which will continue to be supplied (code 048284 RH front upright unit, code

048283 LH front upright unit, code 041128 hinge unit,

code 044083 hinge stop block).

Kit code 050169 has been introduced to simplify management of the uprights; consequently the various components will no longer be supplied individually.

## **0209027**

### **PRESSURE SWITCH, ELECTRO-DISPENSER WITH LED, HIGH-END WIRING**

---

As from serial no. 60515.0001 a new pressure switch and modified wiring are used for production requirements on the top of the range dishwashers and on some models a new electric dispenser with polisher LED is used.

The parts involved are as follows:

LS605

- Code 048306 - Pressure switch;
- Code 049753 - Eaton wiring EC4327;

LS604NL

- Code 048306 - Pressure switch;
- Code 049745 - Eaton wiring EC4327;

LS605UK - GB

- Code 048306 - Pressure switch;
- Code 049750 - Eaton wiring EC4327;

LS605ST - LS605STU - LS660GST - LS680ST - LS605STNX



- Code 048306 - Pressure switch;

- Code 049746 - Eaton wiring EC4327;

LS6435

- Code 048306 - Pressure switch;

- Code 049758 - Eaton wiring EC4327;

- Code 049740 - Electric dispenser with polisher LED;

LS609NL - LS609ST - LS609UK-GB - LS609STTK

- Code 048306 - Pressure switch;

- Code 049760 - Eaton wiring EC4327;

- Code 049740 - Electric dispenser with polisher LED;

LS6439

- Code 048306 - Pressure switch;

- Code 049757 - Eaton wiring EC4327;

- Code 049740 - Electric dispenser with polisher LED;

LS605STSK

- Code 048306 - Pressure switch;

- Code 049754 - Eaton wiring EC4327;

- Code 049740 - Electric dispenser with polisher LED;

LS605TK

- Code 048306 - Pressure switch;

- Code 049756 - Eaton wiring EC4327;

- Code 049740 - Electric dispenser with polisher LED;

The above parts are not interchangeable with the premodification parts and will continue to be supplied.

## **0209033**

### **TOP AND FASTENING ANCHORS ON MODIFIED ARISTON UNITS**

---

As from September '96 the worktop and the fixings on free standing dishwasher models have been modified.

The new parts are as follows:

LS603 - LS603NA - LS603XA - LS605NXST

- Code 050941 - Black worktop;

- Code 044607 - Worktop fixing;

LS603 - LS605 - LS609 - LS601 - LS601P - LS66/G

LS600 - LS68/S - LS6110 - LS609NL - LS603NL

LS6231 - LS6235 - LS6435 - LS6233 - LS6439

LS603A - LS605ST - LS609ST - LS604NL - LS612ST

LS612STUK - LS612STNL - LS603EX - LS603AG - LS601U

LS603UK-GB - LS605UK-GB - LS609UK-GB - LS605STU

LS601UK-GB - LS601A - LS602TK - LS605TK - LS609STTK

LS615ST - LS660GST - LS680ST - LS603CH - LS602A

- Code 050940 - White worktop;

- Code 044607 - Worktop fixing;

The new Worktops are interchangeable with the premodification parts only if the new fixings are used.

## **0209035**

### **MODIFIED ELECTRICAL COMPONENTS AND DIAGRAMS**

---

As from serial no. 50725.0001, the electrical connections on the wiring were modified on the following components on all top of the range dishwasher models:

- Stage one pressure switch (P1);

- Wash motor (ML);

- Extra dry switch (IEXD);

- Drain pump (PS);

- Heating element switch (ITR);

- Fast cycle switch (ICR);

- Regeneration electrovalve (EV2);

- Aquastop switch (IAQS);

Despite a different electrical layout, the new wiring is interchangeable with the premodification wiring; in the case of repairs the serial number must be checked and the correct layout used.

## **Lower gasket kit for Dishwasher LVS2000 tub.**

---

On "LVS\_2000" Dishwasher models, in the event of intervention for the replacement of the tub lower gasket, it is necessary to cut the old gasket flush with the door and use the Kit 056475 "LOWER GASKET KIT FOR TUB ON 'LVS 2000'" which is fixed to the Tub with some springs attached.

## **n1045044**

### **Changes to the terminal board of input cable of Dish-washer**

---

New parts have been introduced on some models of Dishwashers, regarding a change of the input cable that does not have more the terminal board cod. 040987 and that introduces a new connection with a anti-jamming filter cod. 076659.

To introduce these new harnesses, the back and lower cross arms have been changed, too.

The new codes are the more recent ones with a numerical index. In case of intervention, the new code has to be substituted with the new one and the old code has been substituted with the old one

## **0209008**

### **IMPROVED SEAL IN REPLACING DISHWASHER MOTOR**

---

If it is necessary to replace motor code 041106-041747 or even just the pump code 041105, remember that it will be necessary to replace the exhaust pipe gasket code 041104 and the bottom pipe gasket code 041103.

Only in this way can a perfect seal be guaranteed between the pump and dishwasher sump.

## **0209015**

### **SPECIAL ADJUSTABLE DECALCIFIER - ELEDRO**

---

A special water softener that resolves the problem of hard water is available from the M.C.R. (Centralised

Spare Parts Warehouse) under SAT Code 046992.

High reticulation resins are used that permit softening hard water above 70 French degrees.

The part can only be mounted on the "Nuova

Aristella" models.

## **0209016**

### **NEW BASE ON FREE-STANDING MODELS**

---

As from serial no. 50608.0001 a new white moulding

code 046908 and a new black moulding code 047310 only for models LS603X, LS603XA, are mounted on all free standing Aristella one-door dishwasher models.

The new parts are not interchangeable with premodification parts that will continue to be available as usual.

## **0209021**

### **NEW POST ASSEMBLIES + FRICTION PAD**

---

As from serial no. 51209.0001 new front uprights and ferode plug are installed on free standing dishwashers.

The codes of the new parts are as follows:

Code 048283 - LH front upright unit;

Code 048284 - RH front upright unit;

Code 048287 - Ferode plug;

The new parts are not individually interchangeable with the premodification parts which will continue to be supplied (code 040970 LH front reinforcement, code 040983 RH front reinforcement).

## **0209025**

### **POST ASSEMBLY/HINGE ASSEMBLY/HINGE PIN**

---

As from serial no. 60519.0001 the front upright units and the hinge unit have been modified on all free standing dishwasher models.

A new hinge pin has also been fitted.

(NB The ferode plug code 048287 has not been changed).

The codes of the new parts are as follows:

- Code 049681 - RH front upright unit;

- Code 049682 - LH front upright unit;

- Code 049685 - Hinge unit;

- Code 048504 - Hinge pin;

The new parts are not individually interchangeable with the premodification parts which will continue to be supplied (code 048284 RH front upright unit, code

048283 LH front upright unit, code 041128 hinge unit,

code 044083 hinge stop block).

Kit code 050169 has been introduced to simplify management of the uprights; consequently the various components will no longer be supplied individually.

## **0209027**

### **PRESSURE SWITCH, ELECTRO-DISPENSER WITH LED, HIGH-END WIRING**

---

As from serial no. 60515.0001 a new pressure switch and modified wiring are used for production requirements on the top of the range dishwashers and on some models a new electric dispenser with polisher LED is used.

The parts involved are as follows:

LS605

- Code 048306 - Pressure switch;

- Code 049753 - Eaton wiring EC4327;

LS604NL

- Code 048306 - Pressure switch;

- Code 049745 - Eaton wiring EC4327;

LS605UK - GB

- Code 048306 - Pressure switch;

- Code 049750 - Eaton wiring EC4327;

LS605ST - LS605STU - LS660GST - LS680ST - LS605STNX

- Code 048306 - Pressure switch;

- Code 049746 - Eaton wiring EC4327;

LS6435

- Code 048306 - Pressure switch;

- Code 049758 - Eaton wiring EC4327;

- Code 049740 - Electric dispenser with polisher LED;

LS609NL - LS609ST - LS609UK-GB - LS609STTK

- Code 048306 - Pressure switch;

- Code 049760 - Eaton wiring EC4327;
- Code 049740 - Electric dispenser with polisher LED;

#### LS6439

- Code 048306 - Pressure switch;
- Code 049757 - Eaton wiring EC4327;
- Code 049740 - Electric dispenser with polisher LED;

#### LS605STSK

- Code 048306 - Pressure switch;
- Code 049754 - Eaton wiring EC4327;
- Code 049740 - Electric dispenser with polisher LED;

#### LS605TK

- Code 048306 - Pressure switch;
- Code 049756 - Eaton wiring EC4327;
- Code 049740 - Electric dispenser with polisher LED;

The above parts are not interchangeable with the premodification parts and will continue to be supplied.

## 0209033

### TOP AND FASTENING ANCHORS ON MODIFIED ARISTON UNITS

---

As from September '96 the worktop and the fixings on free standing dishwasher models have been modified.

The new parts are as follows:

LS603 - LS603NA - LS603XA - LS605NXST

- Code 050941 - Black worktop;
- Code 044607 - Worktop fixing;

LS603 - LS605 - LS609 - LS601 - LS601P - LS66/G

LS600 - LS68/S - LS6110 - LS609NL - LS603NL

LS6231 - LS6235 - LS6435 - LS6233 - LS6439

LS603A - LS605ST - LS609ST - LS604NL - LS612ST

LS612STUK - LS612STNL - LS603EX - LS603AG - LS601U

LS603UK-GB - LS605UK-GB - LS609UK-GB - LS605STU

LS601UK-GB - LS601A - LS602TK - LS605TK - LS609STTK

LS615ST - LS660GST - LS680ST - LS603CH - LS602A

- Code 050940 - White worktop;

- Code 044607 - Worktop fixing;

The new Worktops are interchangeable with the premodification parts only if the new fixings are used.

## **0209035**

### **MODIFIED ELECTRICAL COMPONENTS AND DIAGRAMS**

---

As from serial no. 50725.0001, the electrical connections on the wiring were modified on the following components on all top of the range dishwasher models:

- Stage one pressure switch (P1);

- Wash motor (ML);

- Extra dry switch (IEXD);

- Drain pump (PS);

- Heating element switch (ITR);

- Fast cycle switch (ICR);

- Regeneration electrovalve (EV2);

- Aquastop switch (IAQS);

Despite a different electrical layout, the new wiring is interchangeable with the premodification wiring; in the case of repairs the serial number must be checked and the correct layout used.

## Electric schemes and links

Cod. 209006a

CONTACT NUMERATION		01	1	2	3	4	5	6	7	8	9	10	11
CONTACT POSITION		b o	b s	b s	b o	b o	b s	b o	b o	b o	b o	b s	b o
DISCHARGE	1	V-30											
1. LOAD + WASHING	2	V-30											
2. WASHING + HEATING (45°)	3	V-30											
3. DISCHARGE + FULL WASHING	4	V-30											
4. LOAD + WASHING	5	P-30											
5. LOAD + WASHING + HEATING + REGENERATION	6	P-30											
6. WASHING + HEATING (45°/55°)	7	V-30											
7. WASHING + HEATING (45°)	8	V-30											
8. WASHING + HEATING (45°)	9	V-30											
9. WASHING + HEATING (45°)	10	V-30											
10. WASHING	11	V-30											
11. WASHING	12	V-30											
12. WASHING	13	V-30											
13. WASHING	14	V-30											
14. WASHING	15	V-30											
15. WASHING	16	V-30											
16. WASHING	17	V-30											
17. WASHING	18	V-30											
18. WASHING	19	V-30											
19. WASHING	20	V-30											
20. WASHING	21	V-30											
21. WASHING	22	V-30											
22. WASHING	23	V-30											
23. WASHING	24	V-30											
24. WASHING	25	V-30											
25. WASHING	26	V-30											
26. WASHING	27	V-30											
27. WASHING	28	V-30											
28. WASHING	29	V-30											
29. WASHING	30	V-30											
30. WASHING	31	V-30											
31. WASHING	32	V-30											
32. WASHING	33	V-30											
33. WASHING	34	V-30											
34. WASHING	35	V-30											
35. WASHING	36	V-30											
36. WASHING	37	V-30											
37. WASHING	38	V-30											
38. WASHING	39	V-30											
39. WASHING	40	V-30											
40. WASHING	41	V-30											
41. WASHING	42	V-30											
42. WASHING	43	V-30											
43. WASHING	44	V-30											
44. WASHING	45	V-30											
45. WASHING	46	V-30											
46. WASHING	47	V-30											
47. WASHING	48	V-30											
48. WASHING	49	V-30											
49. WASHING	50	V-30											
50. WASHING	51	V-30											
51. WASHING	52	V-30											
52. WASHING	53	V-30											
53. WASHING	54	V-30											
54. WASHING	55	V-30											
55. WASHING	56	V-30											
56. WASHING	57	V-30											
57. WASHING	58	V-30											
58. WASHING	59	V-30											
59. WASHING	60	V-30											
60. WASHING	61	V-30											
61. WASHING	62	V-30											
62. WASHING	63	V-30											
63. WASHING	64	V-30											
64. WASHING	65	V-30											
65. WASHING	66	V-30											
66. WASHING	67	V-30											
67. WASHING	68	V-30											
68. WASHING	69	V-30											
69. WASHING	70	V-30											
70. WASHING	71	V-30											
71. WASHING	72	V-30											
72. WASHING	73	V-30											
73. WASHING	74	V-30											
74. WASHING	75	V-30											
75. WASHING	76	V-30											
76. WASHING	77	V-30											
77. WASHING	78	V-30											
78. WASHING	79	V-30											
79. WASHING	80	V-30											
80. WASHING	81	V-30											
81. WASHING	82	V-30											
82. WASHING	83	V-30											
83. WASHING	84	V-30											
84. WASHING	85	V-30											
85. WASHING	86	V-30											
86. WASHING	87	V-30											
87. WASHING	88	V-30											
88. WASHING	89	V-30											
89. WASHING	90	V-30											
90. WASHING	91	V-30											
91. WASHING	92	V-30											
92. WASHING	93	V-30											
93. WASHING	94	V-30											
94. WASHING	95	V-30											
95. WASHING	96	V-30											
96. WASHING	97	V-30											
97. WASHING	98	V-30											
98. WASHING	99	V-30											
99. WASHING	100	V-30											
100. WASHING	101	V-30											
101. WASHING	102	V-30											
102. WASHING	103	V-30											
103. WASHING	104	V-30											
104. WASHING	105	V-30											
105. WASHING	106	V-30											
106. WASHING	107	V-30											
107. WASHING	108	V-30											
108. WASHING	109	V-30											
109. WASHING	110	V-30											
110. WASHING	111	V-30											
111. WASHING	112	V-30											
112. WASHING	113	V-30											
113. WASHING	114	V-30											
114. WASHING	115	V-30											
115. WASHING	116	V-30											
116. WASHING	117	V-30											
117. WASHING	118	V-30											
118. WASHING	119	V-30											
119. WASHING	120	V-30											
120. WASHING	121	V-30											
121. WASHING	122	V-30											
122. WASHING	123	V-30											
123. WASHING	124	V-30											
124. WASHING	125	V-30											
125. WASHING	126	V-30											
126. WASHING	127	V-30											
127. WASHING	128	V-30											
128. WASHING	129	V-30											
129. WASHING	130	V-30											
130. WASHING	131	V-30											
131. WASHING	132	V-30											
132. WASHING	133	V-30											
133. WASHING	134	V-30											
134. WASHING	135	V-30											
135. WASHING	136	V-30											
136. WASHING	137	V-30											
137. WASHING	138	V-30											
138. WASHING	139	V-30											
139. WASHING	140	V-30											
140. WASHING	141	V-30											
141. WASHING	142	V-30											
142. WASHING	143	V-30											
143. WASHING	144	V-30											
144. WASHING	145	V-30											
145. WASHING	146	V-30											
146. WASHING	147	V-30											
147. WASHING	148	V-30											
148. WASHING	149	V-30											
149. WASHING	150	V-30											
150. WASHING	151	V-30											
151. WASHING	152	V-30											
152. WASHING	153	V-30											
153. WASHING	154	V-30											
154. WASHING	155	V-30											
155. WASHING	156	V-30											



## Legend

Legend: 209006a

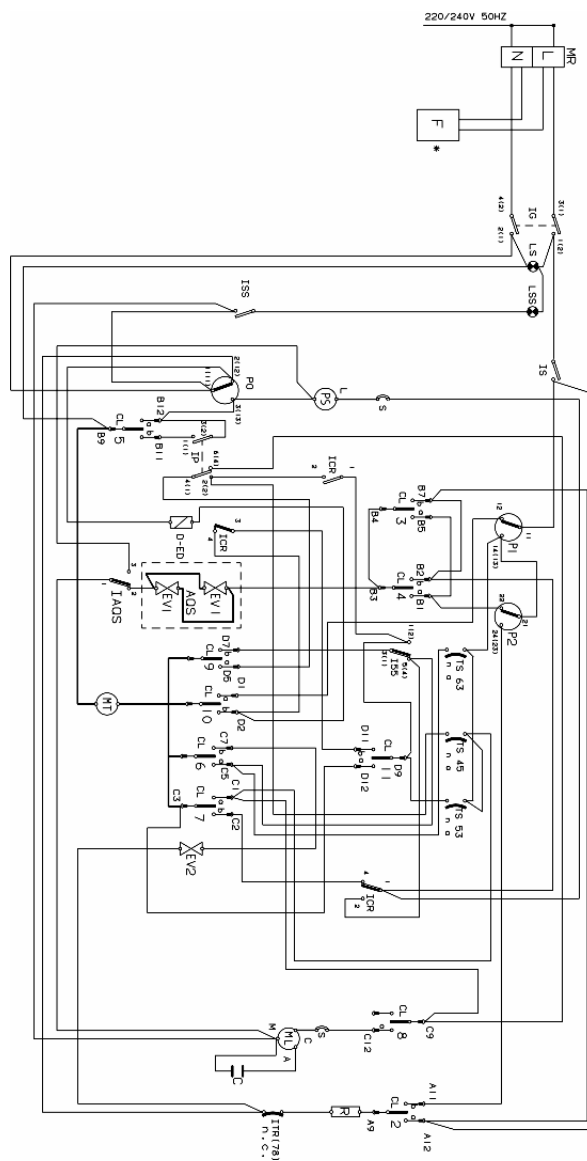
A..	Timer contact	LSS	Salt LED
AQS	Aquastop electrovalve	LV	Fan off lamp
B..	Timer contact	L1	Cycle 1 lamp
C	Condensor	L1/2	Lamp cycle half-load
C..	Timer contact	L2	Cycle 2 lamp
CL	Slow cam	L3	Cycle 3 lamp
CM	Wash pump motor connector	L4	Cycle 4 lamp
CN	Connector	L5	Cycle 5 lamp
CV	Fast cam	L6	Cycle 6 lamp
D..	Timer contact	M	Terminal box
DB	Brightener dispenser	MB	Polisher dip-switch
DD	Display - Detergent dispenser	ME	Acquastop dip-switch
D-ED	Dispenser - Electric dosing device	ML	Wash motor
ECO	Saving switch	MM	Handle dip-switch
ED	Detergent/Brightener dispenser	MP	Door dip-switch
EVC	Hot water electrovalve	MR	Delay-timer motor - Terminal board
EVF	Cold water electrovalve	MT	Timer motor
EVR	Regeneration water electrovalve	MTR	Fast forward timer motor
EV1	Cold water electrovalve MM- Handle dip-switch	MV	Motor fan
EV1/2	Half-load electrovalve	P	Pressure switch
EV2	Regeneration electrovalve	P..	Pressure switch contact
EV3	Hot water electrovalve	PAP	High pressure switch
E1	Cold water electrovalve	PO	Overflow pressure switch
E2	Regeneration electrovalve	PS	Drain pump
E3	Hot water electrovalve	PULS	Push-button panel

F	Anti-interference filter ML- Wash motor	P1	Stage 1 pressure
FA	Radio interferences	P2	Stage 2 pressure switch
IAQS	Aquastop switch	R	Heating element
ID	Switch display	RA	Heating element drying
IE	Saving switch	R.D.	Delay rotary selector
IEXD	Extra dray switch	ROT.	Rotary selector
IG	Main switch	ROT D	Delay rotary selector
IMV	Off motor fan switch	S	Motor overload cutout
IP	High temperature switch	SC	Selector cycli
IS	Cut-off switch	SS	Salt detector
ISB	Polisher led switch	ST	START
ISS	Salt LED switch	T..	Delay-tymer contact
ITR	Heating element switch	Tcp	nner-door earthing connection
I1	On/Off switch - Plus cycle switch -IEC cycle switc	TE	Relay switch
I1/2	Switch half-load	Tfa	Radio interference
I2	Fast switch -IEC cycle switch (standard) - Switch f	THP	Thermoprotector
I2H	2-hour delay switch	TM	Timer
I3	Saving switch- Switch for cycle with no pre-wash	Tml	Pump wash motor earthing connection
I4	Switch for cycle fresh dirty	Tpg	Large door earthing connection
I4H	4-hour delay switch	Tpi	Inspection door earthing connection
I5-ICR	Fast cycle switch	Tpr	Pressure switch
I6	Soak cycle switch	Tps	Discharge pump earthing connection
I6H	6-hour delay switch	Tr	Heating element
L	Mains LED	TS	Safety thermostat
LA	Drying LED	TS 40	Thermostat 40 ?C
LAQ	Aquastop on lamp	TS 50	Thermostat 50 ?C
LC	Cycle ranning lamp	TS 62	Thermostat 62 ?C
LD	Delay activated lamp	TS1	Min. temperature thermostat
LE	Saving cycle	TS2	Max. temperature thermostat
LH2	2-hour delay lamp	TT	Terminal box support earth
LH4	4-hour delay lamp	Tte	Delay-timer earthing connection
LH6	6-hour delay lamp	Tti	Timer earthing connection
LL	Wash LED	T1	Power supply earth cable -Thermostat 45?C
LP	High temperature LED	T2	Lid earth -Thermostat 55?C
LPA	Door open	T3	Timer earth -Thermostat 65?C
LPR	Prewash LED	T36	36?C N.O. Thermostat
LRI	Rinse LED	T4	Heating element earth

LS	Mains LED -Pilot lampe On/Off	T46	46°C N.O. Thermostat
LSB	Polisher LED	T5	Drain pump earth
LSC	Cycle ranning lamp	T57	57°C N.O. Thermostat
LSE	Acquastop LED	T6	Wash motor earth

## Electric schemes and links

Cod. 209030b



## Legend

Legend: 209030b

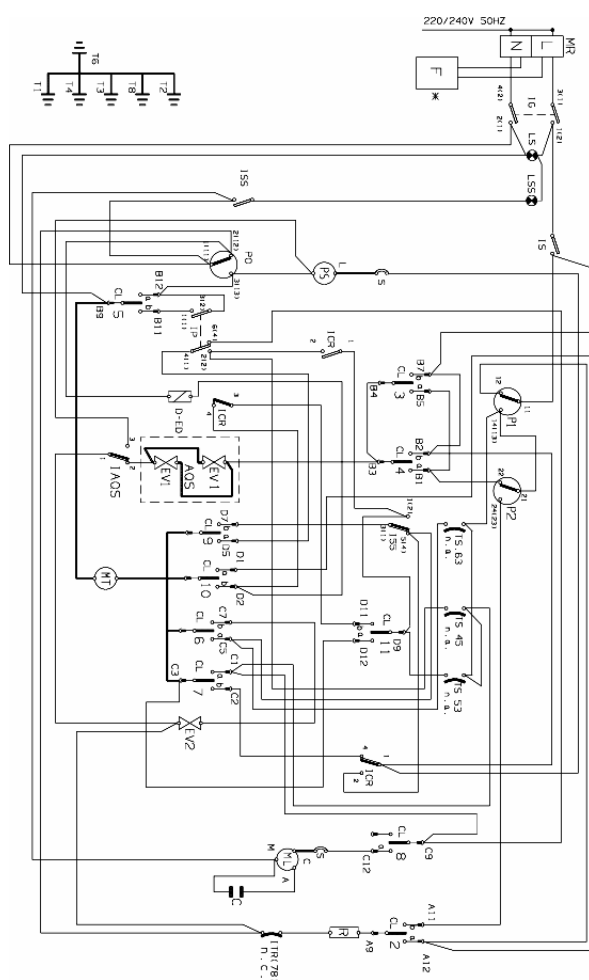
A..	Timer contact	LSS	Salt LED
AQS	Aquastop electrovalve	LV	Fan off lamp
B..	Timer contact	L1	Cycle 1 lamp
C	Condensor	L1/2	Lamp cycle half-load
C..	Timer contact	L2	Cycle 2 lamp
CL	Slow cam	L3	Cycle 3 lamp
CM	Wash pump motor connector	L4	Cycle 4 lamp
CN	Connector	L5	Cycle 5 lamp
CV	Fast cam	L6	Cycle 6 lamp
D..	Timer contact	M	Terminal box
DB	Brightener dispenser	MB	Polisher dip-switch
DD	Display - Detergent dispenser	ME	Acquastop dip-switch
D-ED	Dispenser - Electric dosing device	ML	Wash motor
ECO	Saving switch	MM	Handle dip-switch
ED	Detergent/Brightener dispenser	MP	Door dip-switch
EVC	Hot water electrovalve	MR	Delay-timer motor - Terminal board
EVF	Cold water electrovalve	MT	Timer motor
EVR	Regeneration water electrovalve	MTR	Fast forward timer motor
EV1	Cold water electrovalve MM- Handle dip-switch	MV	Motor fan
EV1/2	Half-load electrovalve	P	Pressure switch
EV2	Regeneration electrovalve	P..	Pressure switch contact
EV3	Hot water electrovalve	PAP	High pressure switch
E1	Cold water electrovalve	PO	Overflow pressure switch
E2	Regeneration electrovalve	PS	Drain pump
E3	Hot water electrovalve	PULS	Push-button panel

F	Anti-interference filter ML- Wash motor	P1	Stage 1 pressure
FA	Radio interferences	P2	Stage 2 pressure switch
IAQS	Aquastop switch	R	Heating element
ID	Switch display	RA	Heating element drying
IE	Saving switch	R.D.	Delay rotary selector
IEXD	Extra dray switch	ROT.	Rotary selector
IG	Main switch	ROT D	Delay rotary selector
IMV	Off motor fan switch	S	Motor overload cutout
IP	High temperature switch	SC	Selector cycli
IS	Cut-off switch	SS	Salt detector
ISB	Polisher led switch	ST	START
ISS	Salt LED switch	T..	Delay-tymer contact
ITR	Heating element switch	Tcp	nner-door earthing connection
I1	On/Off switch - Plus cycle switch -IEC cycle switc	TE	Relay switch
I1/2	Switch half-load	Tfa	Radio interference
I2	Fast switch -IEC cycle switch (standard) - Switch f	THP	Thermoprotector
I2H	2-hour delay switch	TM	Timer
I3	Saving switch- Switch for cycle with no pre-wash	Tml	Pump wash motor earthing connection
I4	Switch for cycle fresh dirty	Tpg	Large door earthing connection
I4H	4-hour delay switch	Tpi	Inspection door earthing connection
I5-ICR	Fast cycle switch	Tpr	Pressure switch
I6	Soak cycle switch	Tps	Discharge pump earthing connection
I6H	6-hour delay switch	Tr	Heating element
L	Mains LED	TS	Safety thermostat
LA	Drying LED	TS 40	Thermostat 40 ?C
LAQ	Aquastop on lamp	TS 50	Thermostat 50 ?C
LC	Cycle ranning lamp	TS 62	Thermostat 62 ?C
LD	Delay activated lamp	TS1	Min. temperature thermostat
LE	Saving cycle	TS2	Max. temperature thermostat
LH2	2-hour delay lamp	TT	Terminal box support earth
LH4	4-hour delay lamp	Tte	Delay-timer earthing connection
LH6	6-hour delay lamp	Tti	Timer earthing connection
LL	Wash LED	T1	Power supply earth cable -Thermostat 45?C
LP	High temperature LED	T2	Lid earth -Thermostat 55?C
LPA	Door open	T3	Timer earth -Thermostat 65?C
LPR	Prewash LED	T36	36?C N.O. Thermostat
LRI	Rinse LED	T4	Heating element earth

LS	Mains LED -Pilot lampe On/Off	T46	46°C N.O. Thermostat
LSB	Polisher LED	T5	Drain pump earth
LSC	Cycle ranning lamp	T57	57°C N.O. Thermostat
LSE	Acquastop LED	T6	Wash motor earth

## Electric schemes and links

Cod. 209056b





## Legend

Legend: 209056b

A..	Timer contact	LSS	Salt LED
AQS	Aquastop electrovalve	LV	Fan off lamp
B..	Timer contact	L1	Cycle 1 lamp
C	Condensor	L1/2	Lamp cycle half-load
C..	Timer contact	L2	Cycle 2 lamp
CL	Slow cam	L3	Cycle 3 lamp
CM	Wash pump motor connector	L4	Cycle 4 lamp
CN	Connector	L5	Cycle 5 lamp
CV	Fast cam	L6	Cycle 6 lamp
D..	Timer contact	M	Terminal box
DB	Brightener dispenser	MB	Polisher dip-switch
DD	Display - Detergent dispenser	ME	Acquastop dip-switch
D-ED	Dispenser - Electric dosing device	ML	Wash motor
ECO	Saving switch	MM	Handle dip-switch
ED	Detergent/Brightener dispenser	MP	Door dip-switch
EVC	Hot water electrovalve	MR	Delay-timer motor - Terminal board
EVF	Cold water electrovalve	MT	Timer motor
EVR	Regeneration water electrovalve	MTR	Fast forward timer motor
EV1	Cold water electrovalve MM- Handle dip-switch	MV	Motor fan
EV1/2	Half-load electrovalve	P	Pressure switch
EV2	Regeneration electrovalve	P..	Pressure switch contact
EV3	Hot water electrovalve	PAP	High pressure switch
E1	Cold water electrovalve	PO	Overflow pressure switch
E2	Regeneration electrovalve	PS	Drain pump
E3	Hot water electrovalve	PULS	Push-button panel

F	Anti-interference filter ML- Wash motor	P1	Stage 1 pressure
FA	Radio interferences	P2	Stage 2 pressure switch
IAQS	Aquastop switch	R	Heating element
ID	Switch display	RA	Heating element drying
IE	Saving switch	R.D.	Delay rotary selector
IEXD	Extra dray switch	ROT.	Rotary selector
IG	Main switch	ROT D	Delay rotary selector
IMV	Off motor fan switch	S	Motor overload cutout
IP	High temperature switch	SC	Selector cycli
IS	Cut-off switch	SS	Salt detector
ISB	Polisher led switch	ST	START
ISS	Salt LED switch	T..	Delay-tymer contact
ITR	Heating element switch	Tcp	nner-door earthing connection
I1	On/Off switch - Plus cycle switch -IEC cycle switc	TE	Relay switch
I1/2	Switch half-load	Tfa	Radio interference
I2	Fast switch -IEC cycle switch (standard) - Switch f	THP	Thermoprotector
I2H	2-hour delay switch	TM	Timer
I3	Saving switch- Switch for cycle with no pre-wash	Tml	Pump wash motor earthing connection
I4	Switch for cycle fresh dirty	Tpg	Large door earthing connection
I4H	4-hour delay switch	Tpi	Inspection door earthing connection
I5-ICR	Fast cycle switch	Tpr	Pressure switch
I6	Soak cycle switch	Tps	Discharge pump earthing connection
I6H	6-hour delay switch	Tr	Heating element
L	Mains LED	TS	Safety thermostat
LA	Drying LED	TS 40	Thermostat 40 ?C
LAQ	Aquastop on lamp	TS 50	Thermostat 50 ?C
LC	Cycle ranning lamp	TS 62	Thermostat 62 ?C
LD	Delay activated lamp	TS1	Min. temperature thermostat
LE	Saving cycle	TS2	Max. temperature thermostat
LH2	2-hour delay lamp	TT	Terminal box support earth
LH4	4-hour delay lamp	Tte	Delay-timer earthing connection
LH6	6-hour delay lamp	Tti	Timer earthing connection
LL	Wash LED	T1	Power supply earth cable -Thermostat 45?C
LP	High temperature LED	T2	Lid earth -Thermostat 55?C
LPA	Door open	T3	Timer earth -Thermostat 65?C
LPR	Prewash LED	T36	36?C N.O. Thermostat
LRI	Rinse LED	T4	Heating element earth

LS	Mains LED -Pilot lampe On/Off	T46	46°C N.O. Thermostat
LSB	Polisher LED	T5	Drain pump earth
LSC	Cycle ranning lamp	T57	57°C N.O. Thermostat
LSE	Acquastop LED	T6	Wash motor earth