

Model type:
DG6345W

Commercial code:
18238

General notes

Technical Documentation guidelines

You can find herewith some generic information to simplify consulting of technical documentation:

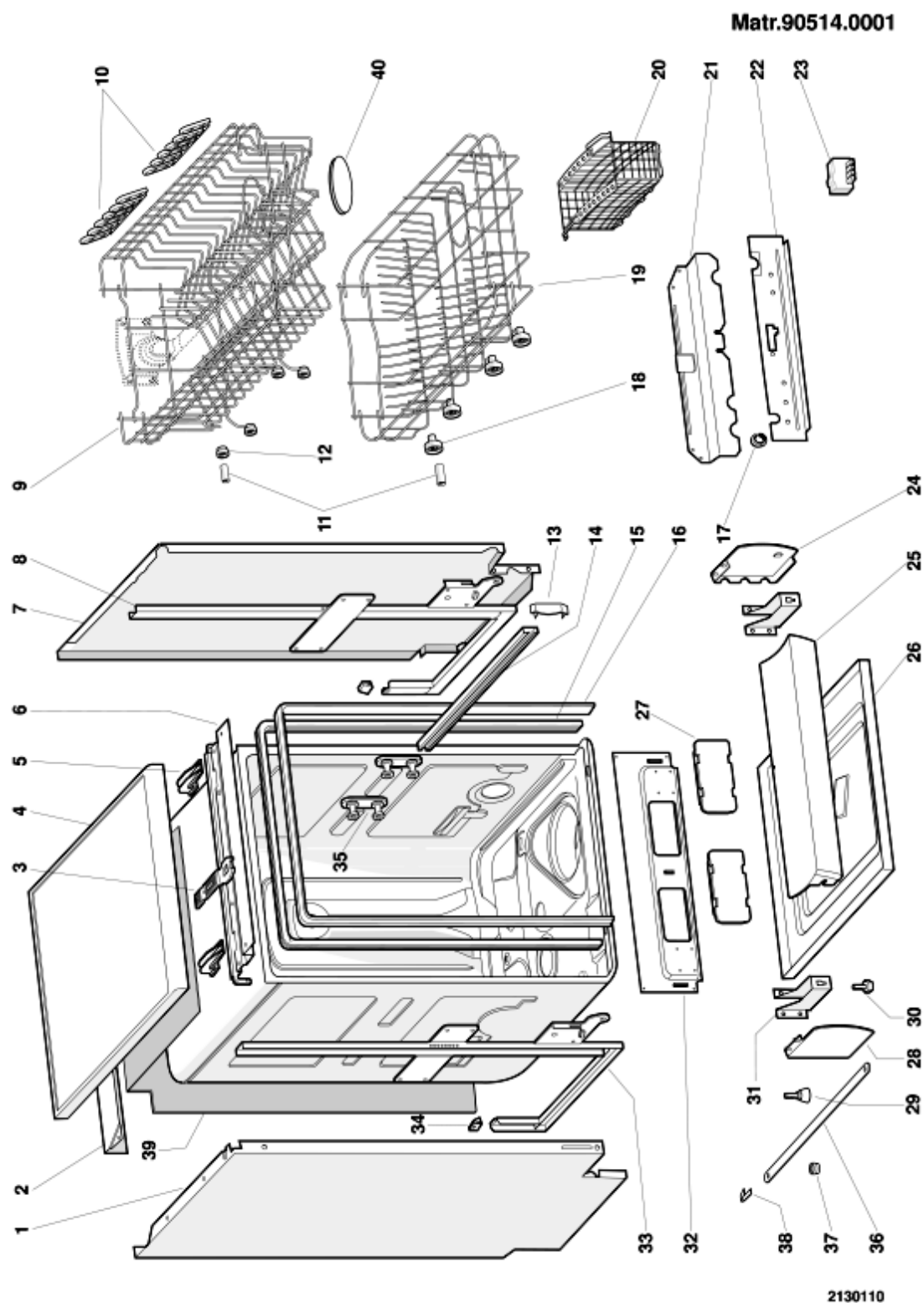
1. Models of same range share the same exploded views, which report the richest set of spare parts: generally, a model does not necessarily have a related spare part for each particular shown on exploded views.
2. Some spare parts can not be represented directly on the exploded views (instruction booklets, specific kit, etc...). You can find those codes in the spare parts list with the same reference of particular where spares are installed or with references 099, 999. Instruction booklets, once managed, appear with 000 reference.
3. On the higher right site of each exploded view there is a serial number which indicates the beginning of the production of certain range: some models might have more than an exploded view for a given category, each distinguished by a different serial no. and linked to another spare parts list. In this case, serial no. is required to supply the right spare part code. Exploded view to be considered is the one with a more recent serial no. but previous than the one of the model that needs assistance.
4. Exploded views might require further updates even after publishing. Addition of new spares will go on following the already existing numeration references. Revision number of an exploded view is shown into last four digits of serial number into upper right hand corner.
5. The spare parts list associated to an exploded view shows related codes of spares managed for a certain model; for each spare part other informations are available:

REF: reference no of spare into a table; SUBSTITUTE: list of spare(s) which can replace a code but that keeps same functional characteristics

INDUSTRIAL CODE: list of variables of a model (shown into model label) where such spare is used; NOTICE: code of information(s) to refer to complete technical intervention, track for changes or to find correct spare part code.
6. Some notices, into a same section are generic therefore cannot be directly linked to a spare part. In order to assist a model in the best way as possible, it is helpful to pay attention to all notices and constantly verify documentation updates
7. Technical documentation cover shows model name and its commercial codes

2130110

Exploded views



2130110

Spare parts list

Ref.	Code	From	To S/N	Substitute	Description	Notice	Industrial
000	C00064477				instruction book i.gb,f,d,e,nl,p		
001	C00054819			1 x C00056660	left side panel lh white		
002	C00063750				rear support - top		
003	C00054831				catch plate (cabinet)		
004	C00063838				cover (frame white 27)		
005	C00044607				hook - top cover retention		
006	C00063761			1 x C00082167	adjustment assembly for		
007	C00054820			1 x C00056660	right side panel white		
008	C00063826			1 x C00054811	side support - front rh	n1045043	
009	C00064481			1 x C00065159	upper basket 8/45		
010	C00046377				flap upper basket 'indesit giugiaro'		
010	C00063829				flap upper basket 'ariston'		
011	C00104638				basket roller axis		
012	C00040994				upper basket wheel		
013	C00040996				runner stop - upper basket		
014	C00033576				basket runner - upper		
015	C00063853			1 x C00116516	door seal - top and sides	n1045020	
015	C00085104				frame support for tub seal 45cm	n1045047	
017	C00054830				drain hose fastener		
018	C00056347				lower basket wheel		
019	C00064482			1 x C00111099	lower basket		
019	C00091695				settore reclinabile cesto inferiore		
020	C00063841				cutlery basket		
021	C00063747			1 x C00093692	rear support - middle		
022	C00063746				lower rear support		
022	C00083705			1 x C00093693	lower rear support aquastop		
023	C00040987				terminal block	n1045044	
024	C00054838				base moulding cover plate rhs		
025	C00063832				plinth panel white 27		
026	C00063742				tray kit 45cm		
027	C00063833				top for front support		
028	C00054837			1 x C00142905	base moulding cover plate lhs		
030	C00056414			1 x C00104611	adjustable foot - all plastic	n1045033	
031	C00056010				foot support x		
032	C00063842				front support - lower		

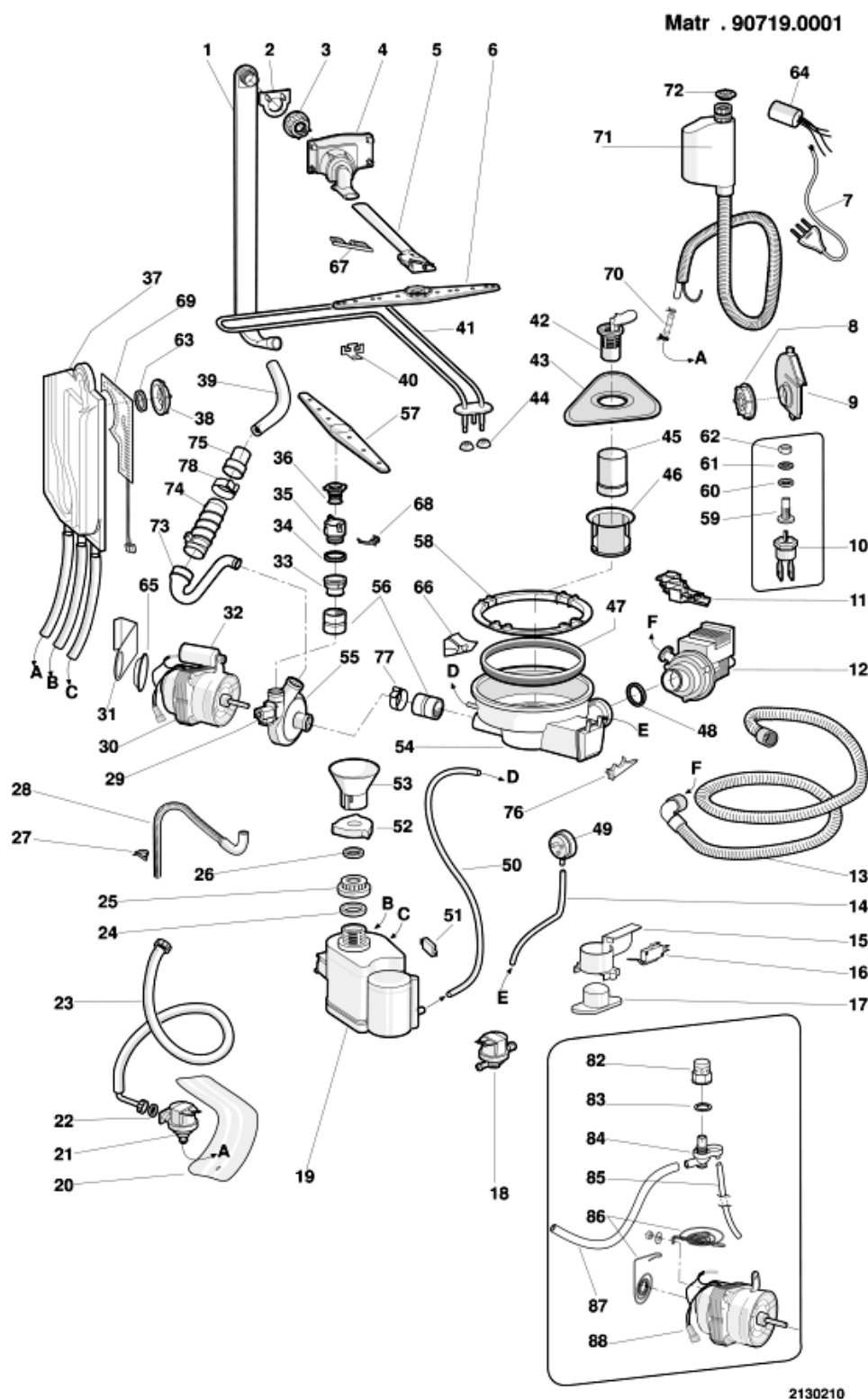
2130110

Spare parts list

Ref.	Code	From	To S/N	Substitute	Description	Notice	Industrial
033	C00063827			1 x C00054812	side support - front lh	n1045043	
034	C00055505			1 x C00066629	post piece		
035	C00054836				kit runner support - upper		
039	C00064498				insulation mat - top and back		
040	C00058542				basket handle cover inner		
040	C00058543				basket handle cover outer		

2130210

Exploded views



2130210

Spare parts list

Ref.	Code	From	To S/N	Substitute	Description	Notice	Industrial
001	C00056001				upper wash arm feed pipe		
002	C00054925				upper was basket guide casing		
003	C00054862			1 x C00144315	ring-nut fasten.external hose top		
004	C00054871			1 x C00094134	water supply distribution assembly	n1045084	
005	C00054926			1 x C00110526 1 x C00110527	upper wash arm feed pipe	n1045084	
006	C00063845			1 x C00110381	set upper wash arm	n1045022	
007	C00063800				supply cable		
007	C00083706			1 x C00143371 1 x C00144229	supply cable schuko		
008	C00054927			1 x C00144335	ring-nut for air-flow body		
009	C00054928				air-flow body		
010	C00041086				thermostat safety 78ønc (dw)		
011	C00064475			1 x C00064681	set thermostat 45°C - 58°C	n1045129	
012	C00054843			1 x C00090537	drain pump v 230 50hz		
013	C00054869				drain hose		
014	C00054829			1 x C00066470	tube 650mm - pressure switch	n1045003 n1045017	
015	C00058842			1 x C00081162	container - overflow unit		
016	C00037205			1 x C00143107	microswitch		
017	C00058843				float - overflow unit		
018	C00033618				electrovalve (water softener)		
019	C00044542			1 x C00041237	softener assy + ev		
019	C00044543			1 x C00041484	softener + ev		
020	C00063847				protection electrovalve		
021	C00104773				solenoid valve		
022	C00018315			1 x C00005781	sealing washer+filter - mains inlet		
023	C00042134			1 x C00009415	mains inlet hose h/c-10bar 90ø		
024	C00103610				seal - softener/wash chamber		
025	C00041090			1 x C00144235	retaining ring - softener		
027	C00063857				tube clamp		
028	C00063836				overflow hose 1.380 45cm		
030	C00055946				wash motor/pump assy 220v-60w	n1045037	
031	C00063846				support bracket - motor		
033	C00054850			1 x C00093752	ring-nut for fastening bottom	n1045063	

2130210

Spare parts list

Ref.	Code	From	To S/N	Substitute	Description	Notice	Industrial
034	C00054915				seal 'o'ring (32,99x2,62)	n1045063	
035	C00054861			1 x C00075111	support - lower wash arm bush	n1045032	
036	C00054860			1 x C00075111	bush - lower wash arm	n1045032	
037	C00054866				water inlet air break		
038	C00054865				retaining ring - air break		
039	C00054867			1 x C00076233	pump junction pipe		
040	C00054872				support bracket - heating element		
041	C00061014			1 x C00144251	heater element 45 1800w/230v	n1045018	
042	C00054863			1 x C00142344	central filter		
043	C00054851			1 x C00145075	outlet filter stainless lvs2000		
044	C00033615				terminal protection - heating		
045	C00054853				filter stainless cylindrical		
046	C00054864			1 x C00061929	outer fine rotating filter		
047	C00054828				gasket - sump fixing ring		
048	C00054917				seal 'o'ring (23,81x2,62)		
049	C00063834				pressure switch 1 level kit (dw)	n1045017	
050	C00054868				tube - softener/sump 1.(480mm)		
051	C00043737				switch - salt light (eledro)	n1045030	
052	C00041088				salt cap		
053	C00005819				salt funnel		
054	C00054870			1 x C00084421	set sump		
055	C00055005				pump cover		
056	C00054859			1 x C00079016	rubber sleeve		
057	C00063835			1 x C00074376	lower wash arm	n1045032	
058	C00054854				sump fixing ferrule		
059	C00063791				temperature sensor		
060	C00063792				seal o-ring		
061	C00063790				washer d.8 mm inox		
062	C00063788			1 x C00097871	lock nut m8 inox		
063	C00075686				jet gasket		
063	C00103689			1 x C00084600	jet gasket		
064	C00076659			1 x C00143383	radio interference suppressor		
065	C00057179				anti vibrations ring		
066	C00056343				control suction		
067	C00056342				steel pin fixing upper wash arm	n1045084	

2130210

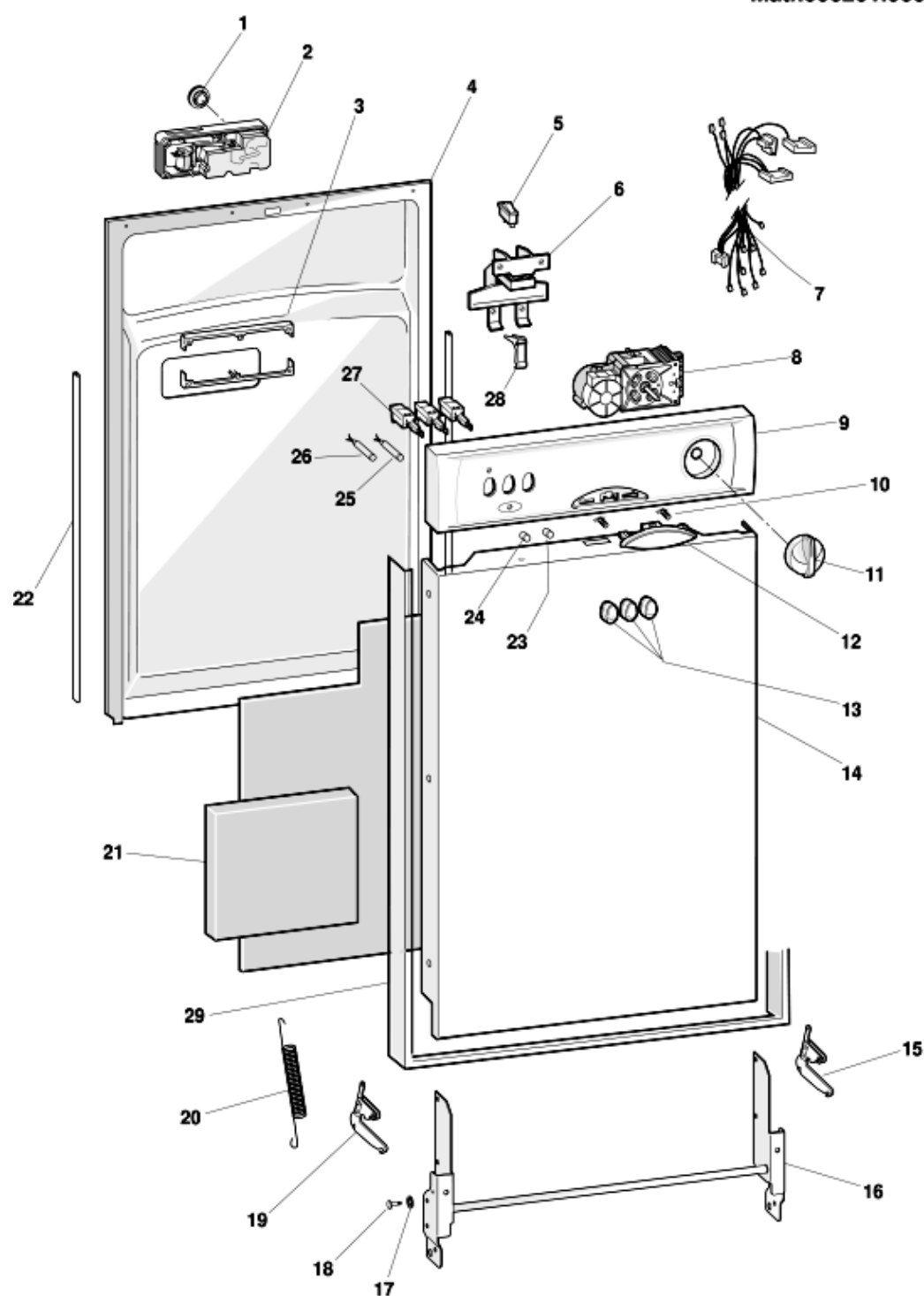
Spare parts list

Ref.	Code	From	To S/N	Substitute	Description	Notice	Industrial
068	C00056737			1 x C00075111	manifold support	n1045032	
069	C00064520				low-power heating element		
077	C00073917				clamp for pump cover		
082	C00075726				bodytop overflow	n1045037	
083	C00075695				connection gasket overflow	n1045037	
084	C00080518				container connection overflow	n1045037	
085	C00079385				overflow hose	n1045037	
086	C00076628				tub spring	n1045037	
087	C00079386			1 x C00054868	overflow hose	n1045037	
088	C00083478				wash motor/pump assy 220v-45w	n1045037	
099	C00040562			1 x C00084479	hose clamp		
099	C00104255				hose clamp		

2130310

Exploded views

Matr.000201.0002



2130310

2130310

Spare parts list

Ref.	Code	From	To S/N	Substitute	Description	Notice	Industrial
002	C00063837				detergent+rinseaid		
004	C00063840			1 x C00091539	inner door panel stainless		
005	C00041194				microswitch		
006	C00063850				door closure		
007	C00064476				wiring harness - copreci td 020008		
007	C00084571				wiring harness - copreci td 020008		
008	C00061015				timer copreci td 020004 -45cm		
009	C00064478				dashboard white		
010	C00063851				handle cover spring		
011	C00044894				timer knob white		
012	C00063849				door handle white		
013	C00044826				push-button knob white		
014	C00064048				door shell bowed		
015	C00054815				hinge item, right kit		
016	C00063758			1 x C00099193	hinge assembly		
017	C00058776				washer d = 6 mm		
018	C00048504				hinge pin		
019	C00054817				hinge item, left kit		
020	C00054823				door spring		
021	C00064497				door soundproofing		
022	C00063831				side strip for door l=425		
023	C00100524				red pilot lamp lens		
024	C00100525				orange pilot lamp lens		
025	C00051880				red pilot lamp		
027	C00053402				pushbutton switch on/off		
027	C00064479				switch nc+na		
027	C00064480				deviator switch nc+na dou.pole		
028	C00063858				lever door hndle		
029	C00064049				door frame white		
099	C00040055				supply tube for barner posterior dx		
099	C00040288			1 x C00037135	lock nut m4		
099	C00041214			1 x C00041229	heat trasmitter paste		
099	C00065862				screw stainless 3,5x8 door liner		
099	C00077438				self-tapping galvanized screw sw		

Notices

n1045003: Length of Pressure Switch Hose

Beginning with serial no. 90106.0001 the pressure switch hose will be lengthened by 20 mm and will measure, therefore, 620 mm. It will be handled with the same SAT part number as the pre-modification part (054829).
The inventories at the Centralized Spare Parts Warehouse have already been updated.

n1045017: New pressure switches and pipes.

Beginning with serial no. 00116.0001, instead of the pressure switch part no. 054841 and the pressure switch pipe part no. 054829, the part no. 063834 already employed on 45 cm appliances and part no. 066470 are used respectively on 60 cm Washing machines manufactured at the None factory.
With the only exception of models LSI61 and LSI61A, fitted with a hide-away electro-mechanical timer, where the pressure switch part no. 056476 must absolutely be fitted (mod. Elbi 120mm).

Should the float come into operation during functioning on pre-modification appliances, then both the pressure switch and the pressure switch pipe should be replaced, using the new parts.
In order to avoid any errors in the use of the part no. 054841, it was eliminated from documentation, whereas a kit is handled with part no. 063834, that is composed of both the pressure switch and the pipe.

n1045018: New meliorative heating elements.

New meliorative heating elements have been created for 60 and 45 cm dishwashers, with the following spare part numbers:
066598, with green surface colour, for 60 cm models.
066602, for 45 cm models.
The new heating elements replace part numbers 046319 and 061014(Rohs 144251).

n1045020: New door gaskets

In order to eliminate any emission of steam from the door, new "TECAR" door gaskets are being used. The new parts keep the same spare part no. 059637 for 60 cm appliances and 063853 for 45 cm ones.

Before replacing the door gaskets, the following operations should be carried out:

Check whether there is any creasing on the corners, and if so then remove the seal and reassemble it correctly.

Use silicone to fill up any cracks in the frame (top left- and right-hand part).

Every time any intervention is carried out on the gasket, make sure the appliance is perfectly level in order to improve the assembly and replacement procedures.

n1045022: New upper spray arm.

Beginning with serial no. 00504.0001, a new upper sprayer assembly will be assembled onto 45 cm LVS2000 dishwashers. The new assembly will keep the same spare part no. 063845 which can be assembled as a replacement for the pre-modification part no.. The old component cannot be assembled instead of the new one.

n1045026: Tub gasket support frame spare part eliminated.

Upon indication from the Quality department at the Dishwasher producing factory, part no. 054932 will no longer be handled as a spare part.

n1045030: Faraday cage for salt sensor indicator. 45cm Models.

The Faraday cage has been coded as the means to eliminate those instances where the salt indicator remains on, Spare Part Code : 077080.

The Faraday cage is to be considered as an exclusive intervention for the 45cm models.

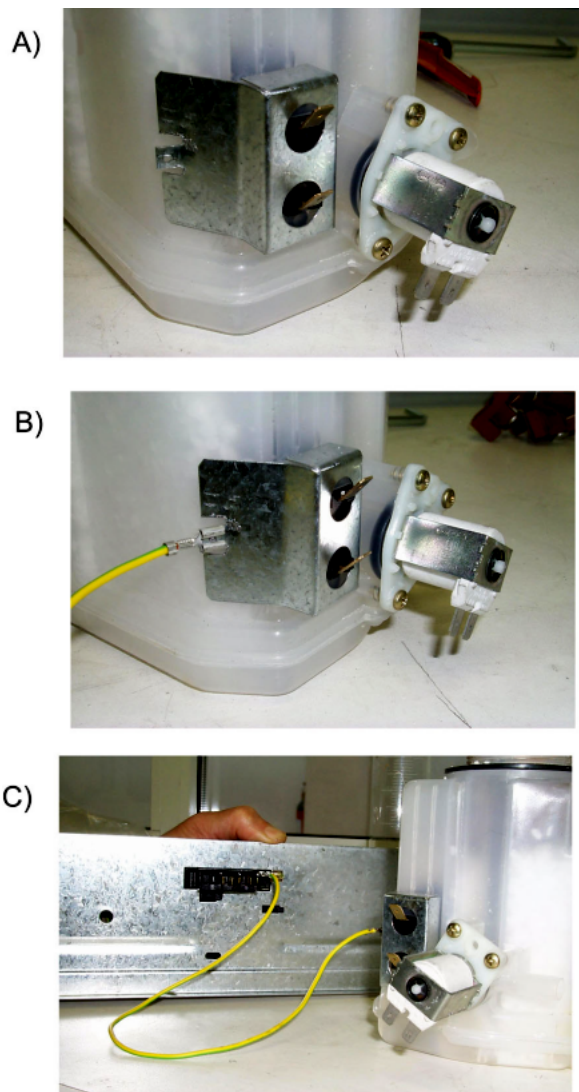
The Faraday cage protects the salt indicator from eventual electromagnetic disturbances and must be mounted as per the following indications :

A) Arrange the Faraday cage on the salt container sensor.

B) Insert the earth cable on the cage.

C) Insert the earth cable to the general clamp.

For assembly closely follow the photographic documentation in the NT003400 design.



n1045032: New lower spray arm assemblies.

Interventions on pre-modification Dishwashers up until serial no.000531.

60 cm appliances:

When replacing the lower spray arm part no.:

054857, the whole block needs to be replaced using the new assembly part no. 066645.

If, on the other hand, one of the following part numbers needs to be replaced

056737 - spring

054861 - manifold

054860 - support

then these should be replaced using kit - 075111.

45 cm appliances:

When replacing the lower spray arm part no.:

063835, the whole block needs to be replaced using the new assembly part no. 074376.

If, on the other hand, one of the following part numbers needs to be replaced

056737 - spring

054861 - manifold

054860 - support

then these should be replaced using kit - 075111.

For interventions on post-modification appliances beginning with serial number 00601, then the following individual new components need to be ordered:

066642 - spacer ring

066643 - manifold

075057 - ring nut

075108 - 60 cm spray arm

075109 - 45 cm spray arm.

n1045033: Kit of adjustable feet for dishwashers LVS2000, 140 mm high.

In order to cope with the increasingly frequent demand from furniture manufacturers, new 14 cm height-adjustable feet are being used on dishwashers LVS2000.

Moreover, a kit of adjustable feet has been made available which allows the worktop to be adjusted to a height of up to nine centimetres.

Spare part number of the Kit:

066655 KIT OF ADJUSTABLE FEET H.140

Spare part numbers for each individual foot:

066653 ADJUSTABLE FOOT WITH NUT H.140 MM

074435 ADJUSTABLE FOOT H=140 MM.

n1045037: New motors with suspension springs.

Indicatively, as of 10th October '00, the new overflow system was introduced on some dishwasher models from the LVS2000 range, where it is assembled as standard on the new Mark2 range appliances.

The new components are described as follows:

a) Overflow unit: cod sat 075726;

b) Overflow connection gasket: cod sat 075695;

c) Overflow connection container: cod sat 080518;

d) Overflow pipe for connection container: cod sat 079385-079386;

e) Motor suspension spring: cod sat 076628;

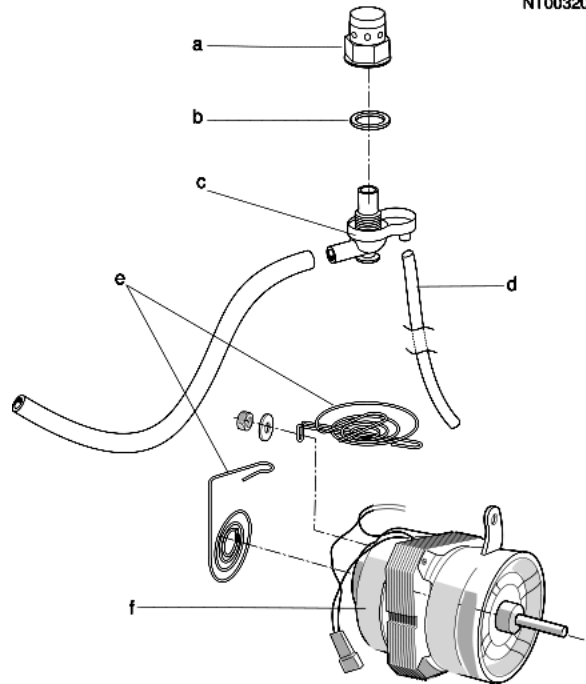
f) Suspended electropump: cod sat 083478-088121-078587-076627-077114-077140.

See technical drawing NT003200.

The new system also includes the assembly of the new motor with suspension spring which is not interchangeable with the old motor anchored to the support bracket.

n1045043: New feet regulation sets.

The new feet regulation sets must be mounted with the modified door posts of diameter 15 and the new back tray holes of diameter 15.



The bushes code 083632 must be mounted in the diameter 15 door posts on built-in models without Easy regulation feet. The tray set and the old feet regulation sets are not interchangeable with the new, and therefore the old are handled with the old and the new with the new.

The old codes are as follows :

054980 - 054981 - 061990 - 065922.

The new codes are :

083632 - 078397 - 078396 - 078809 - 083625.

In the 60 models the door posts maintain the same spare part code but the drill holes should be widened to mount the new bushes and new feet.

In the 45 model the new door posts may be used code 083623 and 083624, or mount the old codes 063826 and 063827, widening the holes for the new feet bushes.

n1045044: Changes to the terminal board of input cable of Dish-washer

New parts have been introduced on some models of Dishwashers, regarding a change of the input cable that does not has more the terminal board cod. 040987 and that introduces a new connection with a anti-jamming filter cod. 076659(Rohs 143383).

To introduce these new harnesses, the back and lower cross arms have been changed, too.

The new codes are the more recent ones with a numerical index. In case of intervention, the new code has to be substituted with the new one and the old code has been substituted with the old one

n1045063: Introduction of coupling+ring nut Sat code 093752

From serial number 30224.0001, all dishwashers affected by this modification have been equipped with the new coupling+ring nut assembly Sat code 093752, in place of coupling Sat code 079016, ring nut Sat code 054850 and gasket Sat code 054915.

Ring nut Sat code 054850 will continue to be available from the spare parts warehouse while stocks last, and coupling Sat code

079016 will continue to be stocked because it is still used for the tank-volute connection.
Picture N1045063 illustrates the premodification structure in FIG1 and the new structure in FIG2.

N1045063

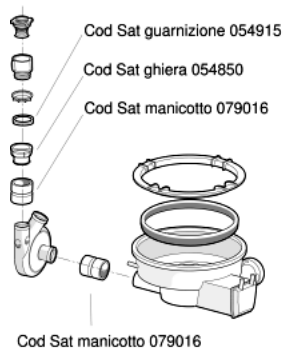


FIG. 1
STRUTTURA
PREMODIFICA

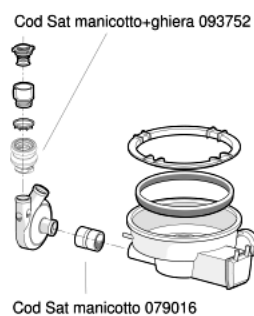


FIG. 2
NUOVA
STRUTTURA

Cod. lg000100

LG000102

mod.DG6345W

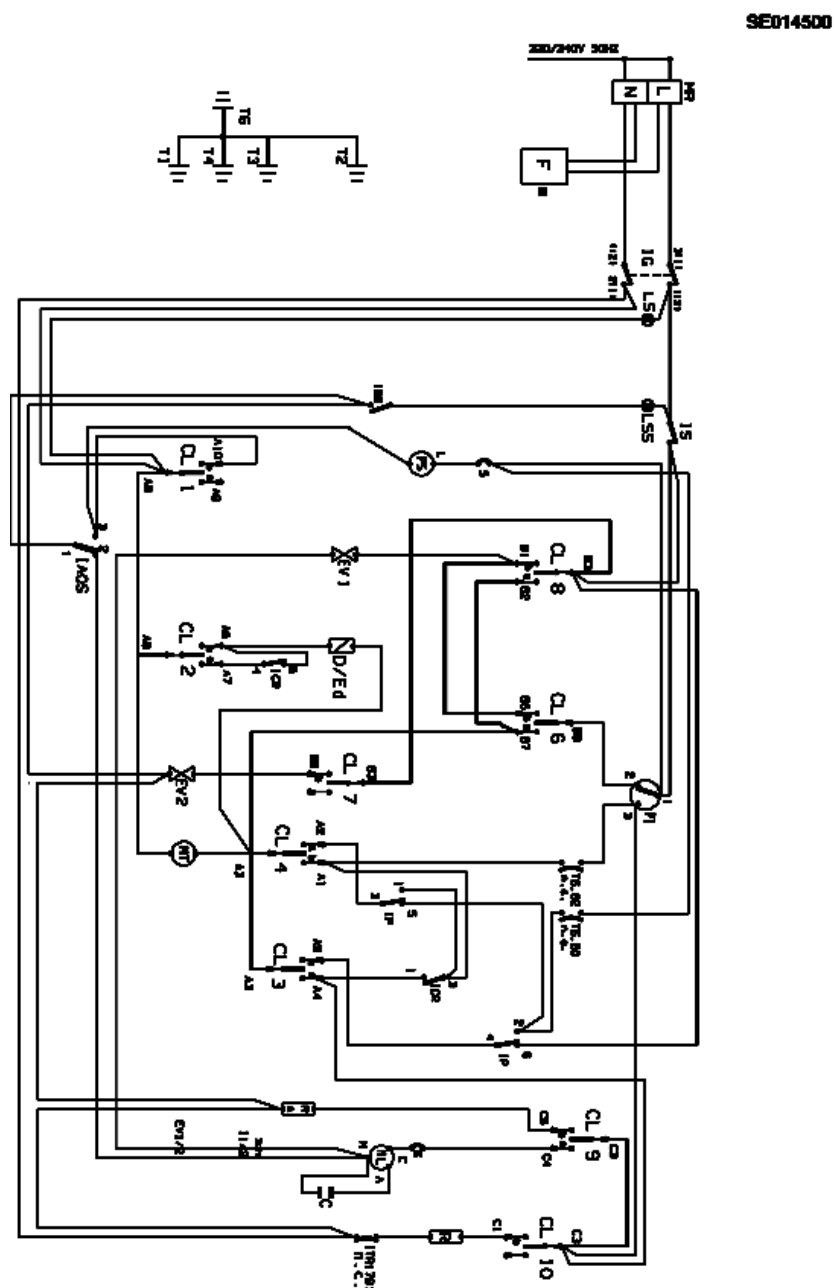
Legend

Legend: lg000100

A..	Timer contact	LPA	Door open
AQS	Aquastop electrovalve	LPR	Prewash LED
B..	Timer contact	LRI	Rinse LED
C	Condensor	LS	Mains LED -Pilot lampe On/Off
C..	Timer contact	LSB	Polisher LED
CL	Slow cam	LSC	Cycle ranning lamp
CM	Wash pump motor connector	LSE	Acquastop LED
CN	Connector	LSS	Salt LED
CV	Fast cam	LV	Fan off lamp
D-ED	Dispenser - Electric dosing device	M	Terminal box
D..	Timer contact	MB	Polisher dip-switch
DB	Brightener dispenser	ME	Acquastop dip-switch
DD	Display - Detergent dispenser	ML	Wash motor
E1	Cold water electrovalve	MM	Handle dip-switch
E2	Regeneration electrovalve	MP	Door dip-switch
E3	Hot water electrovalve	MR	Delay-timer motor - Terminal board
ECO	Saving switch	MT	Timer motor
ED	Detergent/Brightener dispenser	MTR	Fast forward timer motor
EV1	Cold water electrovalve MM- Handle dip-switch	MV	Motor fan
EV1/2	Half-load electrovalve	P	Pressure switch
EV2	Regeneration electrovalve	P..	Pressure switch contact
EV3	Hot water electrovalve	P1	Stage 1 pressure
EVC	Hot water electrovalve	P2	Stage 2 pressure switch
EVF	Cold water electrovalve	PAP	High pressure switch
EVR	Regeneration water electrovalve	PO	Overflow pressure switch
F	Anti-interference filter ML- Wash motor	PS	Drain pump
FA	Radio interferences	PULS	Push-button panel
I1	On/Off switch - Plus cycle switch -IEC cycle	R	Heating element
I1/2	Switch half-load	R.D.	Delay rotary selector
I2	Fast switch -IEC cycle switch (standard) -	RA	Heating element drying
I2H	2-hour delay switch	ROT D	Delay rotary selector
I3	Saving switch- Switch for cycle with no pre-	ROT.	Rotary selector
I4	Switch for cycle fresh dirty	S	Motor overload cutout

I4H	4-hour delay switch	SC	Selector cycli
I5-ICR	Fast cycle switch	SS	Salt detector
I6	Soak cycle switch	ST	START
I6H	6-hour delay switch	T..	Delay-tymer contact
IAQS	Aquastop switch	T1	Power supply earth cable -Thermostat 45°C
ID	Switch display	T2	Lid earth -Thermostat 55°C
IE	Saving switch	T3	Timer earth -Thermostat 65°C
IEXD	Extra dray switch	T36	36°C N.O. Thermostat
IG	Main switch	T4	Heating element earth
IMV	Off motor fan switch	T46	46°C N.O. Thermostat
IP	High temperature switch	T5	Drain pump earth
IS	Cut-off switch	T57	57°C N.O. Thermostat
ISB	Polisher led switch	T6	Wash motor earth
ISS	Salt LED switch	T8	External lid earth
ITR	Heating element switch	TE	Relay switch
L	Mains LED	THP	Thermoprotector
L1	Cycle 1 lamp	TM	Timer
L1/2	Lamp cicle half-load	TS	Safety thermostat
L2	Cycle 2 lamp	TS 40	Thermostat 40 °C
L3	Cycle 3 lamp	TS 50	Thermostat 50 °C
L4	Cycle 4 lamp	TS 62	Thermostat 62 °C
L5	Cycle 5 lamp	TS1	Min. temperature thermostat
L6	Cycle 6 lamp	TS2	Max. temperature thermostat
LA	Drying LED	TT	Terminal box support earth
LAQ	Aquastop on lamp	Tcp	nner-door earthing connection
LC	Cycle ranning lamp	Tfa	Radio interference
LD	Delay activated lamp	Tml	Pump wash motor earthing connection
LE	Saving cycle	Tpg	Large door earthing connection
LH2	2-hour delay lamp	Tpi	Inspection door earthing connection
LH4	4-hour delay lamp	Tpr	Pressure switch
LH6	6-hour delay lamp	Tps	Discharge pump earthing connection
LL	Wash LED	Tr	Heating element
LP	High temperature LED	Tte	Delay-timer earthing connection

Cod. se014500



Legend

Legend: se014500

A..	Timer contact	LPA	Door open
AQS	Aquastop electrovalve	LPR	Prewash LED
B..	Timer contact	LRI	Rinse LED
C	Condensor	LS	Mains LED -Pilot lampe On/Off
C..	Timer contact	LSB	Polisher LED
CL	Slow cam	LSC	Cycle ranning lamp
CM	Wash pump motor connector	LSE	Acquastop LED
CN	Connector	LSS	Salt LED
CV	Fast cam	LV	Fan off lamp
D-ED	Dispenser - Electric dosing device	M	Terminal box
D..	Timer contact	MB	Polisher dip-switch
DB	Brightener dispenser	ME	Acquastop dip-switch
DD	Display - Detergent dispenser	ML	Wash motor
E1	Cold water electrovalve	MM	Handle dip-switch
E2	Regeneration electrovalve	MP	Door dip-switch
E3	Hot water electrovalve	MR	Delay-timer motor - Terminal board
ECO	Saving switch	MT	Timer motor
ED	Detergent/Brightener dispenser	MTR	Fast forward timer motor
EV1	Cold water electrovalve MM- Handle dip-switch	MV	Motor fan
EV1/2	Half-load electrovalve	P	Pressure switch
EV2	Regeneration electrovalve	P..	Pressure switch contact
EV3	Hot water electrovalve	P1	Stage 1 pressure
EVC	Hot water electrovalve	P2	Stage 2 pressure switch
EVF	Cold water electrovalve	PAP	High pressure switch
EVR	Regeneration water electrovalve	PO	Overflow pressure switch
F	Anti-interference filter ML- Wash motor	PS	Drain pump
FA	Radio interferences	PULS	Push-button panel
I1	On/Off switch - Plus cycle switch -IEC cycle	R	Heating element
I1/2	Switch half-load	R.D.	Delay rotary selector
I2	Fast switch -IEC cycle switch (standard) -	RA	Heating element drying
I2H	2-hour delay switch	ROT D	Delay rotary selector
I3	Saving switch- Switch for cycle with no pre-	ROT.	Rotary selector
I4	Switch for cycle fresh dirty	S	Motor overload cutout

I4H	4-hour delay switch	SC	Selector cycli
I5-ICR	Fast cycle switch	SS	Salt detector
I6	Soak cycle switch	ST	START
I6H	6-hour delay switch	T..	Delay-tymer contact
IAQS	Aquastop switch	T1	Power supply earth cable -Thermostat 45°C
ID	Switch display	T2	Lid earth -Thermostat 55°C
IE	Saving switch	T3	Timer earth -Thermostat 65°C
IEXD	Exstra dray switch	T36	36°C N.O. Thermostat
IG	Main switch	T4	Heating element earth
IMV	Off motor fan switch	T46	46°C N.O. Thermostat
IP	High temperature switch	T5	Drain pump earth
IS	Cut-off switch	T57	57°C N.O. Thermostat
ISB	Polisher led switch	T6	Wash motor earth
ISS	Salt LED switch	T8	External lid earth
ITR	Heating element switch	TE	Relay switch
L	Mains LED	THP	Thermoprotector
L1	Cycle 1 lamp	TM	Timer
L1/2	Lamp cicle half-load	TS	Safety thermostat
L2	Cycle 2 lamp	TS 40	Thermostat 40 °C
L3	Cycle 3 lamp	TS 50	Thermostat 50 °C
L4	Cycle 4 lamp	TS 62	Thermostat 62 °C
L5	Cycle 5 lamp	TS1	Min. temperature thermostat
L6	Cycle 6 lamp	TS2	Max. temperature thermostat
LA	Drying LED	TT	Terminal box support earth
LAQ	Aquastop on lamp	Tcp	nner-door earthing connection
LC	Cycle ranning lamp	Tfa	Radio interference
LD	Delay activated lamp	Tml	Pump wash motor earthing connection
LE	Saving cycle	Tpg	Large door earthing connection
LH2	2-hour delay lamp	Tpi	Inspection door earthing connection
LH4	4-hour delay lamp	Tpr	Pressure switch
LH6	6-hour delay lamp	Tps	Discharge pump earthing connection
LL	Wash LED	Tr	Heating element
LP	High temperature LED	Tte	Delay-timer earthing connection